


20 flats with high energetic performance

by Joël Coupez / 2015-06-10 15:00:29 / Belgique / 9278 / FR

New Construction



Primary energy need :
10 kWhep/m².an
(Calculation method :)

ENERGY CONSUMPTION

Economical building

Building **A**

< 50	A
51 à 90	B
91 à 150	C
151 à 230	D
231 à 330	E
331 à 450	F
> 450	G

Energy-intensive building

Building Type : Collective housing > 50m
Construction Year : 2013
Delivery year : 2014
Address 1 - street : 1410 WATERLOO, Belgique
Climate zone : [Cfb] Marine Mild Winter, warm summer, no dry season.

Net Floor Area : 3 200 m² Autre type de surface nette
Construction/refurbishment cost : 3 100 000 €
Cost/m2 : 968.75 €/m²

Proposed by :



General information

See more details about this project

<http://www.bureaucoupez.be>

Data reliability

Self-declared

<https://www.construction21.org/belgique/data/sources/users/3/exportbe-be-1-0-1--0compiled.xls>

Stakeholders

Stakeholders

Function : Contractor

Régie Foncière Provinciale autonome

Function : Designer

Bureau Coupez et Associés Architectes

Joel Coupez

<http://www.bureaucoupez.be>

Contracting method

General Contractor

Energy

Energy consumption

Primary energy need : 10,00 kWh_{ep}/m².an

Primary energy need for standard building : 350,00 kWh_{ep}/m².an

Calculation method :

CEEB : 0.0001

Final Energy : 70,00 kWh_{ef}/m².an

Real final energy consumption

Year of the real energy consumption : 2 015

Envelope performance

Envelope U-Value : 0,15 W.m⁻².K⁻¹

Building Compactness Coefficient : 1,00

Indicator : EN 13829 - n50 » (en 1/h-1)

Air Tightness Value : 1,50

<https://www.construction21.org/belgique/data/sources/users/3/watexphppr120111124.xls>

Renewables & systems

Systems

Heating system :

- Others

Hot water system :

- Low temperature gas boiler
- Solar Thermal

Cooling system :

- No cooling system

Ventilation system :

- Natural ventilation
- Nocturnal ventilation
- Free-cooling
- Double flow heat exchanger

<https://www.construction21.org/belgique/data/sources/users/3/watcalcul-puissance-de-chauffage.xls>

Renewable systems :

- Solar photovoltaic
- Solar Thermal

Products

Product

Xella

Xella BE Kruibeeksesteenweg 24 2070 Burcht Belgique Tél: +32 (0)3 250 47 00 Fax: +32 (0)3 250 47 06

http://www.xella.be/index_fr.php

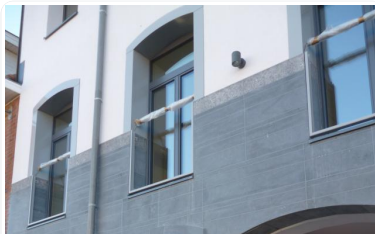
Product category : Gros œuvre / Structure, maçonnerie, façade

Carrière du hainaut

Rue du Cognebeau 245. B-7060 Soignies.

<http://www.carrieresduhainaut.com/>

Product category : Second œuvre / Peinture, revêtements muraux



Costs

CONTEST

Building candidate in the category



Matériaux bio-sourcés et recyclés



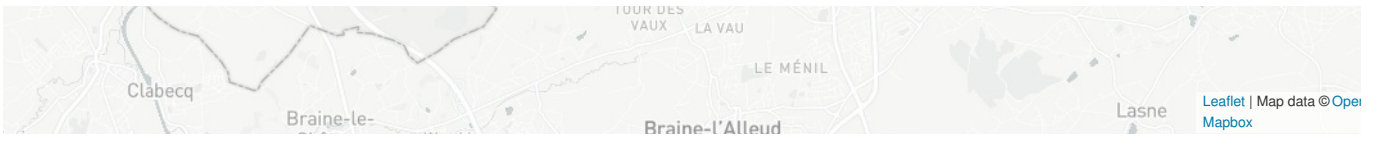
**Green Building
Solutions Awards 2015**

powered by Construction21.org



Bâtiment zéro énergie





Date Export : 20230325122240