



T'es COP ou pas CAP ? / To COP or not to COPE?

Sustainable Buildings & Cities Symposium
6th of March, SMA-BTP, Paris

The background of the slide is a photograph of a city street. On the left, there are modern buildings with distinctive white, angular roof structures. A road with white lane markings and arrows runs through the center, with a white van and a blue car visible. On the right, there are more modern buildings and lush green trees. The sky is blue with some clouds.

SESSION 5

Tomorrow's players have their say: the conclusions of student work

Introducing the host



Anne-Sophie Tardy
Construction21


Editorial Manager

Student innovation workshop


Tomorrow's players have their say

Crossing visions...

 **10 training centres** involved / ~20 **students**

 **Individual work in inter-school groups**
(architects, Compagnons, engineers, urban planners)

 4 topics: **renovation/refurbishment, energy, urban heat islands, water**

 Group presentations to the public and discussions with professionals

To come up with solutions

- Use sources of inspiration available in the living world
- Forward-looking ideas or overview of the current situation on one of the subjects

The background image shows a city street with modern buildings, including a prominent one with a white and grey facade and a glass-fronted skyscraper. A road with white lane markings and arrows is visible, with a white van, a white car, and a blue car driving. The scene is set under a blue sky with light clouds. A large blue oval is overlaid on the center of the image, containing the text.

Group 3

Urban heat islands

Les îlots de chaleur urbains

Quel monde pour demain ?

Chlorissia LENERAND

Thibault GAUTHIER

Emeline COLLIGNON

Aymeric CHESTERIKOFF

Nathan AMBOULOU

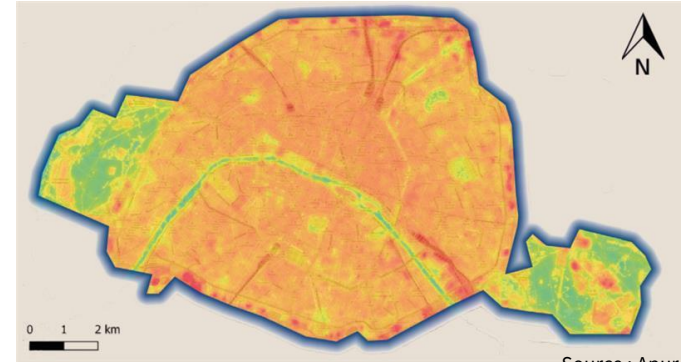
ESITC Paris

EIVP

ENSA Paris Belleville

ESILV

ENSA Paris Val de Seine



Source : Apur

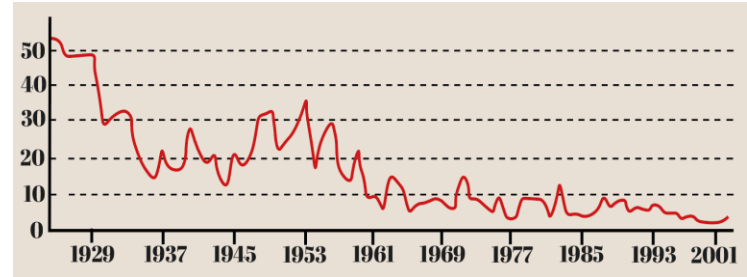
Quels enjeux ?

Îlots de chaleur urbains : quelles conséquences ?

- Stress thermique
- Aggravation des maladies chroniques préexistantes
- Hausse de la mortalité
- Diminution de la qualité de l'air extérieur et intérieur
- Hausse de la demande en énergie



Source : Apur



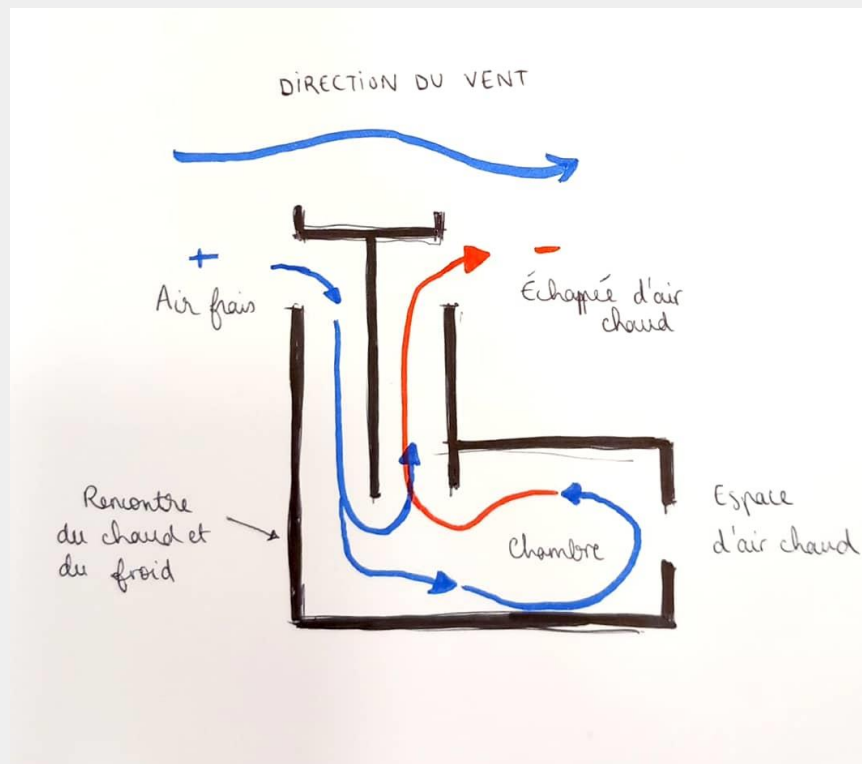
Source : Paris data

Les pistes de solutions low-tech

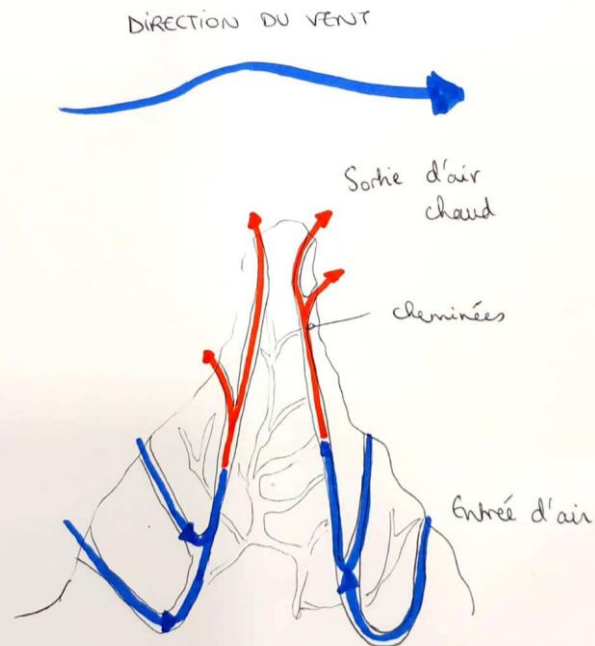
- Favorisation de la ventilation naturelle
- Optimisation des matériaux (effet d'albédo/ restitution de chaleur)
- Revégétalisation
- Gestion de l'eau
- Isolation des bâtiments
- Sensibilisation des habitants



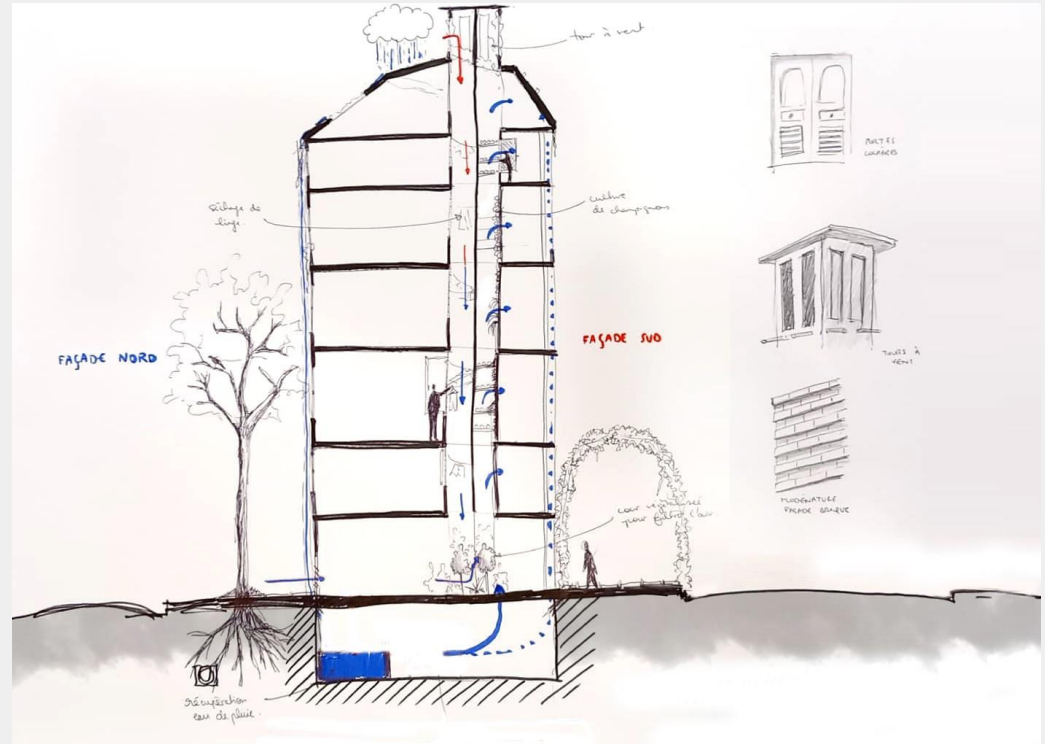
La tour à vent ou Badguir



Biomimétisme : Le principe de la termitière



Visuel du projet : L'architecture vernaculaire et le biomimétisme comme inspiration



Conclusion

Bien sûr il faut agir sur chacun des plans.
Privilégier les pratiques de l'architecture vernaculaire
basées sur le biomimétisme.

À nous de jouer !

Merci pour votre attention !