



SINGAPORE

SUSTAINABLE ARCHITECTURE

TROPICAL DESIGN - URBAN SOLUTIONS- GREEN MARK WORKSHOP

July 11th – 16th 2016

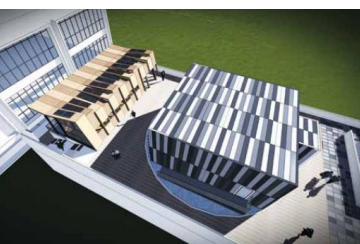


Marina Barrage

Built across the mouth of Marina Channel, Marina Barrage creates Singapore's 15th reservoir, and the first in the heart of the city.

With a catchment area of 10,000 hectares, or one-sixth the size of Singapore, Marina catchment is the island's largest and most urbanised catchment.

The Sustainable Singapore Gallery (SSG) is an information and sensory exhibition showcasing Singapore's efforts towards environmental sustainability.



Rotatable laboratory for the Tropics

Visit to the world's first high-rise rotatable laboratory for the tropics, developed in collaboration with California's Lawrence Berkeley national laboratory. Built on the rooftop of a six-storey building at the BCA Academy, the BCA Skylab is constructed on a rotatable platform to enable tests to be carried out at any orientation to the sun and wind



Zero Energy Building (ZEB)

The first Zero Energy Building (ZEB) in South-east Asia retrofitted from an existing building. Converted from a three-storey former workshop, ZEB houses offices, classrooms and a resource centre.

As a critical test-bedding facility, the 4,500 m2 building produces enough energy to power the building.



URA (Urban Redevelopment Authority)

First opened in 1999, the Singapore City Gallery tells the story of Singapore's physical and sustainable transformation over the past 50 years.

Interactive and experiential exhibition of Singapore Sustainable master plan .

ORGANIZED BY :

GreenA
Consultants

COURSE FEES

USD 2200 / PAX

INCLUDES:

- Accommodation– 6 days, 5 nights inclusive of daily breakfast.
**double occupancy, twin sharing.
Single rooms available upon request.
Subject to additional charges.*
- Inclusive of all site visit entrance fees.
- Local transportation costs
- Entry to the City Solutions Singapore exhibition.
- One day workshop in BCA - Green Mark

MORE INFORMATION:

GreenA Consultants

www.greenaconsultants.com

Tel : +65 6339 3067 - +65 96120652

Email: ana@greenaconsultants.com

enquiry@greenaconsultants.com

Miembros





SINGAPORE

SUSTAINABLE ARCHITECTURE TROPICAL DESIGN - URBAN SOLUTIONS- GREEN MARK WORKSHOP



BCA GREEN MARK

Introductory course to BCA Green Mark Certification

Is a local initiative to drive Singapore's construction industry towards more environment-friendly buildings. It is intended to promote sustainability in the built environment and raise environmental awareness among developers, designers and builders when they start project conceptualisation and design, as well as during construction.

Gardens by the Bay

Gardens by the Bay captures the essence of Singapore as the premier tropical Garden City. Underlying the concept of Gardens by the Bay are the principles of environmental sustainability.

Eleven of the Super trees are embedded with environmentally sustainable functions. Some have photovoltaic cells on their canopies to harvest solar energy for lighting up the Super trees., while others are integrated with the Conservatories and serve as air exhaust receptacles

Semakau Landfill

Visit to Semakau Landfill to explore the diverse array of plants, corals, birds and animals which reside on the island next to what mostly used to be the trash – incineration ash and non-incinerable waste. Come, see and smell for yourself how an operational landfill that, contrary to popular perception, is clean, green and exists in harmony with nature

HDB Centre of Building Research

Previously known as Prefabrication Technology Centre, is the Master Laboratory to incubate and nurture new technologies to be used for building homes for future generation. Officially opened in July 1995, it was the first of its kind in the region then to be set up to spearhead the use of prefabrication technology

**Includes visit to the exhibition :
City Solutions Singapore 2016**

ORGANIZED BY :
GreenA
Consultants

**BCA- GREEN MARK WORKSHOP
VISITS TO CERTIFIED BUILDINGS**



GreenA Consultants

www.greenaconsultants.com

Tel : +65 6339 3067 - +65 96120652

Email: ana@greenaconsultants.com

enquiry@greenaconsultants.com

