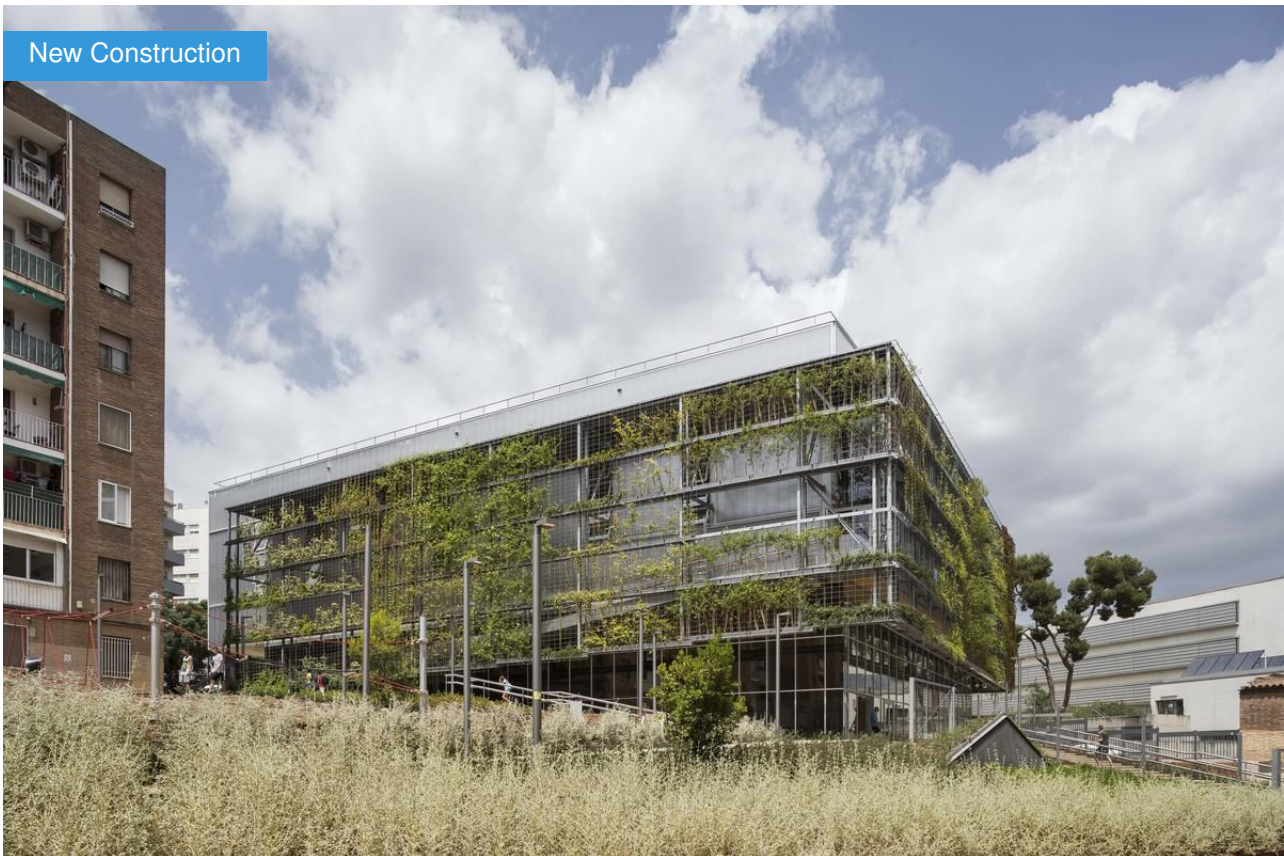


Turo de la Peira: Sports center and indoor pool with almost zero consumption

by Oliver Style / 2020-01-27 14:22:20 / España / 3632 / ES



New Construction

Building Type : Indoor gymnasium, sports hall, stadium

Construction Year : 2018

Delivery year : 2019

Address 1 - street : Carrer Sant Iscle 50-54 08031 BARCELONA, España

Climate zone : [Csb] Coastal Mediterranean - Mild with cool, dry summer.

Net Floor Area : 4 430 m² Other

Construction/refurbishment cost : 4 962 276 €

Cost/m2 : 1120.15 €/m²

Certifications :



Primary energy need :

45 kWhpe/m².year

(Calculation method : RD: 47/2007)

ENERGY CONSUMPTION

Economical building

Building

< **A**

A

51 à **B**

91 à **C**

151 à **D**

231 à 330 **E**

331 à 450 **F**

> 450 **G**

Energy-intensive building

Winner of the Sports Buildings category of the WAF 2019 awards for its landscape integration into the urban environment, sustainability, and social commitment, and [Winner of the Mapei Award for Sustainable Architecture 2019](#), the new sports facility with indoor pool Turo de la Peira opened its doors in June 2019 in the neighborhood of Turo de la Peira, Barcelona.

The 4,430 m² building features a unique laminated timber structure, supporting two superimposed spaces with large spans (27m), and a hydroponic cultivation plant façade. A comprehensive urban regeneration was proposed, concentrating the two facilities in a single building, in order to free up space and create a large garden. A demineralization and renaturalization operation, eliminating walls and hard surfaces and bridging the slopes with landscaped slopes that allow different adapted routes and create seating areas and children's playgrounds.

The interior of the block has become a landscaped public space that provides environmental quality, is a place for social interaction, and serves as a preamble to the equipment. The design of the building has been carried out with passive architecture criteria.

The compact volume, recessed into the ground, minimizes the façade surface and avoids thermal losses. The configuration of the different parts of the envelope has been selectively determined according to the solar orientation and requirements of each space based on the results of thermodynamic simulations with Energyplus-Design Builder and Radiance for natural lighting.

The pool was simulated with the EnergyPlus indoor heated pool module, which calculates the energy balance between the pool water surface and its surroundings, taking into account the temperature of the water leaving the thermal generator, the temperature of the cold water entering from the network, the setpoint temperature of the pool water and the hourly occupancy of the people in the water and their metabolic rate.

According to the results of the simulations, the optimization of the thermal envelope generates a total saving of 182,011 kWh/year, approximately 27,302 €/year. The climatic conditioning of the sports hall is carried out exclusively in a natural way. Side windows combined with 24 skylights are monitored by an intelligent automation system that works with temperature, humidity, CO₂ and rain sensors.

The curtain wall of the swimming pool and the multi-sports court are fitted with low-emissivity glass and argon gas in chambers. In addition, the curtain wall on the court is made of a modular system of extruded polycarbonate with UV protection, allowing natural light to enter.

See more details about this project

<https://www.annanoguera.com/turo-de-la-peira-en>

Data reliability

Self-declared

Photo credit

Enric Duch

Stakeholders

Contractor

Name : Institut Barcelona Esports (IBE), Ajuntament de Barcelona

Construction Manager

Name : Institut Barcelona Esports (IBE) Ajuntament de Barcelona

Stakeholders

Function : Designer

Anna Noguera, Javier Fernández

arquitectura[a]annanoguera.com

Architects

Function : Site manager

Dídac Dalmau

Technical architect

Function : Structures calculist

Manel Fernández, Ton Coll (Bernuz-Fernández-SLP)

Structures

Function : Others

Anna Zahonero, Pepa Morán, Víctor Adorno

Scenery

Function : Environmental consultancy

Xavier Saltó. Caba Sostenibilidad

xsalto[a]caba.cat

Design of the building's energy strategy, optimization in the use of water, responsible environmental materials and resources and LEED certification of the building

Function : Thermal consultancy agency

Oliver Style

praxis[a]praxis-rb.com

Thermo dynamic and daylighting simulations, thermal envelope design

Function : Others

Salvador Segura, Cristina Carmona (Ardèvol's Consultors Associats)

Measurements and budgets

Function : Others

Eric Duch

Photographer

Function : Thermal consultancy agency

Micheel Wassouf - Energiehaus Arquitectos

info[a]energiehaus.es

Energy simulations

Owner approach of sustainability

The Turo de la Peira neighborhood is characterized by a large building density of high-rise housing blocks, and by the limited provision of green spaces. The block patio where the intervention is carried out is a space framed by a heterogeneous network of different types of dwellings and occupied, before the performance, by two dispersed and obsolete equipment; a swimming pool and an outdoor court. The result was an inhospitable and unstructured urban environment, characterized by the sum of residual spaces of hard surfaces, concrete walls and stairs that bridged the gap between the two streets, and by a total absence of vegetation.

A comprehensive regeneration was proposed at the urban level, concentrating the two facilities in a single building, in order to free up space and create a large garden. A demineralization and renaturation operation, eliminating walls and hard surfaces and saving unevenness with landscaped slopes that allow different adapted routes and create seating areas and children's games. The interior of the block has been converted into a landscaped public space that provides environmental quality, which is a place for social relations, and which serves as a preamble to the equipment.

The proposal places special emphasis on the perceptions that the physical space transmits to the user. The natural lighting, the vegetation and the use of materials such as wood provide a cozy and warm atmosphere, away from the cold characteristic of many similar equipment.

The sports court works exclusively with natural light and ventilation throughout the day thanks to the transparency of its four facades and the roof skylights. In the pool area, half buried in the uneven terrain, the natural lighting is controlled and intimate.

Wood is present in all the spaces of the building, transmitting comfort and warmth. The excellent characteristics of wood in relation to its life cycle was one of the reasons why this prefabricated laminated wood construction system was chosen. The entire main structure is built with this system. Its good mechanical behavior, its adaptation to the swimming pool environment, its lightness and consequent savings in foundations and especially its speed of execution were also valued.

In the pool, the chromaticism of the large beams contrasts with the coolness of the water. The abundant natural light highlights its color and texture. A plant gallery protects from sunlight and creates a bioclimatic space. The planting system is hydroponic. From the track, you can see the plant facade in all its dimension through the curtain wall, being able to enjoy its changes and blooms according to the time of year.

Architectural description

The main structure of the building is especially unique because it consists of two superimposed spaces with large lights (27m track and 21m pool). A hanging metal substructure is also added that crosses the skin of the façade and serves as a support for the green gallery.

The design of the building has been carried out with passive architecture criteria. The compact volume embedded in the ground minimizes the façade surface avoiding thermal losses. The configuration of the different parts of the envelope has been selectively determined according to the solar orientation and requirements of each space based on the results of thermodynamic simulations.

The curtain wall of the swimming pool and the sports court have low-emissivity glass, additionally the facade closure on the court is made by means of a modular system of coextruded polycarbonate with UV protection, allowing the entry of natural light.

A plant gallery made up of linear planters and electrowelded steel mesh where the plants climb surrounds the building, protecting it from the sun, filtering the light and creating a bioclimatic space that allows you to enjoy the changes of season and flowering throughout the year.

Energy

Energy consumption

Primary energy need : 45,00 kWhpe/m².year

Primary energy need for standard building : 260,00 kWhpe/m².year

Calculation method : RD: 47/2007

More information :

According to the results of the simulations, the optimization of the thermal envelope generates a total saving of 182,011 kWh / a, approximately € 27,302 / a, with a weighted price of electrical energy of € 0.15 / kWh.

Renewables & systems

Systems

Heating system :

- Heat pump

Hot water system :

- Heat pump

Cooling system :

- Reversible heat pump

Ventilation system :

- Natural ventilation

Renewable systems :

- Solar photovoltaic

The pool heating and hot water production is produced by an efficient aérothermal system with Mitsubishi Q-Ton production equipment, using CO₂ as a refrigerant. Heat pumps are partially powered by photovoltaic production. Dehumidification of the pool is carried out using a Hidros SRH3000 dehumidifier. Additionally, 2 VRV units condensed by water (with hydraulic ring) air conditioning the other spaces.

The track is ventilated naturally through 11 motorized openings on the façade and 24 domotic skylights, facilitating simple, cross, and chimney-effect ventilation. In this way, a supply of healthy air is achieved from the garden and the bioclimatic space that makes up the green façade.

Indoor and outdoor temperature sensors act on the openings to ventilate the track and maintain comfort conditions within the established range. Rain and wind sensors detect when it is necessary for the skylights and openings on the façade to close so that no water enters. During these moments, or when it is required to evacuate heat from the track and natural ventilation is not capable of doing so, the mechanical extraction fans integrated in each skylight are turned on to force air renewal.

The building has 600 m² of roof covered by photovoltaic panels, which generate 95,534 kWh per year.

Environment

GHG emissions

GHG in use : 6,00 KgCO₂/m²/year

Life Cycle Analysis

Eco-design material :

100% prefabricated wood structure

The excellent characteristics of wood in relation to its life cycle was one of the reasons why this prefabricated laminated wood system was chosen, with zero environmental impact, since its ecological footprint is considered zero. Its good mechanical behavior, adaptation to the pool environment, lightness and

consequent savings in foundations were also valued, and especially its speed of execution, in a difficult environment. All wood is PEFC certified and wood flooring FSC.

Water management

Green spaces with low irrigation consumption: Local species adapted to the Mediterranean climate in the urbanization and on the green façade. The façade planting system is hydroponic, chosen for its lightness, durability of the substrate, water-holding capacity, and ease of installation.

A large tank located in the basement collects rainwater from the roof for recycling and use for the entire irrigation of the green facade. Gray shower water is also recovered for reuse for 100% of toilet discharges. With all these strategies we reduce the consumption of drinking water by 41.91% according to the parameters of the LEED certification.

The urbanization of the garden is made up of permeable surfaces where the unevenness is built with plant slopes that end in draining strips that collect rainwater to return it in its entirety to the water table.

Health & Comfort

Health & comfort :

During the day, the track and pool areas are completely illuminated in a natural way. There are daylight sensors that, when it is not enough, connect the electric lights (dimnable in a range from 0 to 100) according to the needs of each space. All lights are high-efficiency, mercury-free, high CRI, low color temperature LEDs to warm up environments. The service spaces have presence sensors. By controlling artificial lighting, savings of approximately 53,596 kWh / a are achieved.

The climatic conditioning of the track is carried out exclusively in a natural way. Side windows combined with 24 skylights are monitored by an intelligent automation system that works with temperature, humidity, CO2 and rain sensors.

Products

Product

Egoin's CLT

Product category :

Mitsubishi Q-Ton heat pumps

Product category :

Costs

Construction and exploitation costs

Additional information on costs :

PEM Building:

- € 4,962,276

-1,119 € / m² (4,434 m²)

PEM Urbanization:

- € 767,841

-195 € / m² (3,936m²)

Urban Environment

Urban environment

The building is located semi-embedded in the land, adapting to the topography and saving the gap between the two streets. The facade to Sant Iscle street is configured as an urban front, with a corner porch that widens the sidewalk and invites us to enter. The building minimizes its impact on the garden with a green gallery that surrounds it. The volume appears then, as one more element of the garden, without blending itself, but dialoguing with it.

The vegetation of the garden bends and rises up the façade, leaving a crack that collects the entrance to the pool. The building is another element of the garden

and dialogues with the green space outside.

Land plot area

5 489,00 m²

Built-up area

28,30 %

Green space

1 548,00

Building Environmental Quality

Building Environmental Quality

- indoor air quality and health
- comfort (visual, olfactive, thermal)
- energy efficiency
- renewable energies
- integration in the land
- products and materials

Contest

- Winner of the Sports Buildings category of the WAF2019 awards for its landscape integration into the urban environment, sustainability, and social commitment
- Winner of the Mapei Award for Sustainable Architecture2019
- The building has a unique structure made of plywood and a hydroponically grown vegetable façade.
- As a result of a detailed analysis process with thermo-dynamic and light simulation, the building has an optimized thermal envelope, with an innovative natural ventilation solution in the sports court.
- In the process of LEED certification, more than 1,000 m² of photovoltaic panels on the roof generate 95,534 kWh/year.

Contest categories



Energy & Temperate Climates

