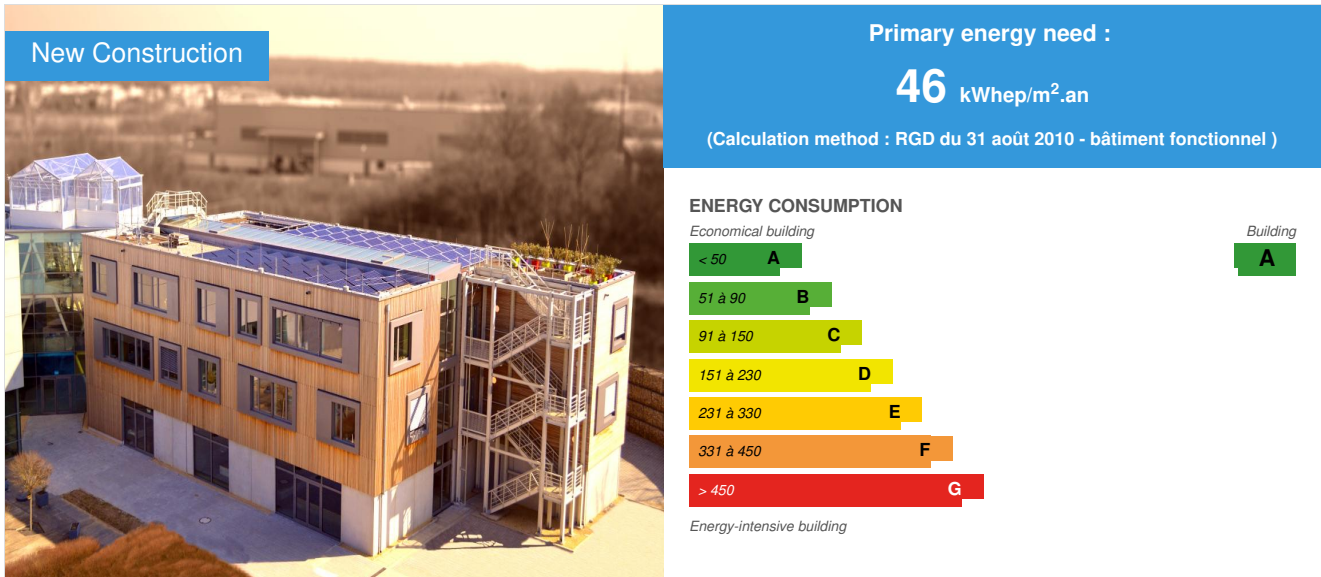


Neobuild Innovation Centre

by [Violaine Giaux](#) / © 2014-10-01 16:00:00 / Luxembourg / © 20829 / FR



Building Type : Office building < 28m
Construction Year : 2013
Delivery year : 2014
Address 1 - street : ZAE Krakelshaff, 5A L-3290 BETTEMBOURG, Luxembourg
Climate zone : [Cfb] Marine Mild Winter, warm summer, no dry season.

Net Floor Area : 1 420 m²
Construction/refurbishment cost : 5 000 000 €
Number of Work station : 140 Work station
Cost/m2 : 3521.13 €/m²

General information

The Neobuild Innovation Centre is a ground-breaking and experimental showcase building.

Indeed, it heralds the arrival of the 2020 ZeroEnergy Buildings.

This building incorporates a number of the most innovative processes and materials in its construction.

In addition, it truly is a Living Lab, where a variety of different materials, products and installations can be tested and monitored.

Manufacturers can also show off their innovative solutions in order to test them under real-world operating conditions and get feedback from users.

Lastly, this building is also a showcase, given that it will be used as a life-size resource for providing specific training (e.g. HVAC).

See more details about this project

<http://neobuild.lu/nos-services/neobuild-innovation-living-lab>

<http://www.construction21.org/luxembourg/articles/lu/laureat-batiments-intelligents-2015-neobuild-innovation-center-luxembourg.html>

Data reliability

Stakeholders

Stakeholders

Function : Designer

ARCO

arco@arco.lu - Tél. 42 17 70

<http://www.arco.lu/>

Function : Structures calculist

Milestone Consulting Engineers

info@mstconsult.lu - Té. 31 61 61 1

<http://www.mstconsult.lu/>

Function : Thermal consultancy agency

COCERT

info@cocert.lu - Tél. 26 59 56 42

<http://www.cocert.lu/>

Function : Other consultancy agency

Siegel Schleimer

info@siegelschleimer.lu - Tél. 26 37 87 37

<http://www.siegelschleimer.lu/>

Engineering and Design Department (electricity lot)

Function : Assistance to the Contracting Authority

CIMALUX

info@cimalux.lu - Tél. 55 25 25 1

<http://www.cimalux.lu/>

Function : Company

POECKES

Tél. 56 46 36 1

Concrete structural works

Function : Company

Steffen

info@steffen-holzbau.lu - Tél. 71 96 86 0

<http://www.steffen-holzbau.lu/>

Wooden structural works

Function : Company

a+p Kieffer Omnitec

info@apko.lu - Tél. 47 48 48 1

<http://www.apko.lu/>

HVAC + Electricity

Function : Company

Servalux

info@servalux.lu - Tél. 26 95 31 81

<http://www.servalux.lu/>

Woodwork

Function : Company

OST

info@ost.lu - Tél. 71 90 91 1

<http://www.ost.lu/>

Woodwork

Owner approach of sustainability

This building very much fits in with the Horizon 2020 initiative set up by the European Commission. In effect, by that date, any new building must be "zero energy". Neobuild wanted to get a six-year head start on this regulation by constructing a building which heralds the arrival of smart buildings and which will use as much energy as it will generate. To do this, special heating and ventilation systems have been set up, which will be supplied by a number of renewable energy systems (such as solar panels, geothermal energy, ice stores, etc.).

Alongside this purely environmental aspect, a lot of importance has been placed on the comfort of users, an equally vital component. This building will be regularly monitored and its users will play a key participatory role in this, being able to determine the heating or lighting levels, for example.

Finally, the construction techniques are obviously in line with the latest products on the market, or even experimental ones, such as for insulation or for planting roofs and walls.

Architectural description

The Neobuild building is a two-level solid timber structure standing on a concrete lower storey. The 500m² ground floor is used for the plant rooms, a workshop for training and a meeting space for professionals. The two upper floors comprise offices, training and meeting rooms, with a total floor space of 1,000m². The flat roofs are used for plant and equipment; they have a useable surface area of 560m². The new building is connected to the IFSB building (Training Institute for the Construction Industry) by a triangular atrium made from a 3D web of metal beams. For moving between the different entrances to IFSB, Neobuild and the main private entrance to Neobuild from the road there are concrete-coated pan joist floors. The net surface area of this zone is 300m². The main building is split in two vertically by a glass corridor, creating two staggered units perpendicular to the existing building. On one of these units, the wooden facade is arranged vertically whilst on the other it is horizontal, based on the aspect and exposure to the sun of the units. The external woodwork is fitted with over-sized frames in order to emphasise the volume of wood over the concrete base.

The atrium is partially enclosed at the sides using glass curtain walls in order to highlight the transparency of its role as a connection. Sections have been left vacant for experimental purposes. In order to target a reduction in energy usage and greenhouse gas emissions, innovative environmentally friendly, high-performance products have been used. These products meet the requirements for passive buildings, such as some of the windows which have electrochromic panes of glass. Different types of insulation have been fitted in each of the external walls and their behaviour is monitored using probes.

The building, produced in accordance with "passive" energy requirements, is air-conditioned throughout (heating/ventilation/cooling). In addition, three rooms have new ground-heating systems. The energy is supplied from a number of renewable sources such as geothermal wells, ice stores or bins or simply the outside air. Three heat pumps juggle the different energy sources to test the optimum configuration. Eleven lighting designs were assessed using LED technologies. The power required is less than 10W/m².

The internal layout has been created by taking account, in part, of the lighting designs and the precise acoustic ratings to be achieved. As a result, a variety of different types of screed, indoor woodwork, false ceilings and acoustic wall panels are used.

The part-planted roof houses the solar panels, the weather station, the urban greenhouses with hydroponic or even aeroponic systems, along with empty spaces for future developments (such as a solar concentrator).

If you had to do it again?

Perhaps plan the project in a more optimal way, in full cooperation with the architect.

In effect, this would have allowed the building to be better designed and its construction could have been planned better, under the keen eye of the architect.

As the building is experimental, choices had to be made in the selection of materials used.

Yet, new materials are being developed constantly.

We are fortunate, therefore, that we can continually evolve the building, able to change this or that material over time.

Building users opinion

As part of a continuous improvement process, Neobuild has issued a satisfaction questionnaire to the occupants of the building and to visitors, in order to gather their views and comments and to assess any potential areas for improvement. These surveys have helped to enhance the level of comfort of the occupants. The results showed that the occupants particularly appreciated the lighting levels (e.g. electrochromic glass), the visible wooden structure which gives Neobuild Innovation Centre a welcoming feel, the roof-top greenhouse and garden, the sports equipment, the user-friendly kitchenettes and the individual control of the lights and the outdoor blinds.

Energy

Energy consumption

Primary energy need : 46,00 kWh/m².an

Primary energy need for standard building : 142,50 kWh/m².an

Calculation method : RGD du 31 août 2010 - bâtiment fonctionnel

Final Energy : 17,30 kWh/m².an

Breakdown for energy consumption :

• Heating: 27%;

- DHW: 6%;
- Cooling: 0%;
- Lighting: 50%;
- Ventilation: 15%;
- Auxiliary power: 2%.

Envelope performance

Envelope U-Value : $0,23 \text{ W.m}^{-2}.\text{K}^{-1}$

More information :

There are different types of facades, roofs, paving slabs and windows in order to study their behaviour over time using sensors.

FACADES

- Pre-cast concrete VIP insulating wall
- Solid timber + cellulose wadding
- Solid timber + glass foam
- Solid timber + rock wool
- Solid timber + wood fibre

PAVING SLABS

- Extruded polystyrene
- Glass foam

ROOFING

- Extruded polystyrene
- Glass foam
- VIP
- Rock wool
- Wood fibre

WINDOWS

- Double-glazed fire break (experimental connection area)
- Tripled-glazed
- Electrochromic glass
- Wooden frame
- Aluminium frame
- Aluminium and wood frame
- Wood-cork frame

Building Compactness Coefficient : 0,35

Indicator : EN 13829 - q50 » (en m³/h.m³)

Air Tightness Value : 0,54

Real final energy consumption

Real final energy consumption/m² : 63,00 kWh_{ef}/m².an

Year of the real energy consumption : 2 015

Renewables & systems

Systems

Heating system :

- Heat pump
- Geothermal heat pump
- Low temperature floor heating
- Fuel cell

Hot water system :

- Heat pump

Cooling system :

- Geothermal heat pump
- Radiant ceiling

Ventilation system :

- Double flow heat exchanger

Renewable systems :

- Solar photovoltaic
- Solar Thermal
- Heat pump
- Fuel cell

Renewable energy production : 37,00 %

Other information on HVAC :

A small part of the building is dedicated to assessing the performance of the phase change panels (made of paraffin which melts) with a view to cooling the building. These panels are cooled with a heat exchanger located in a buried tank which is used to collect rain water.

67 solar panels from 7 manufacturers have been installed in order to compare their performance. In the immediate future, Neobuild expects to install energy storage to optimise the internal use of the electricity generated.

Smart Building

BMS :

All of the building's technical solutions are managed by a Central Building Management (CMB) system which can also be accessed from touchscreen tablets, to enable maintenance, as well as for an educational tool for Neobuild staff.

Smartgrid :

The building is grid-ready, e.g. smart load shedding connected directly to the CMB.

Environment

GHG emissions

GHG in use : 11,30 KgCO₂/m²/an

Methodology used :

Government regulation of 31 August 2010, functional building which includes: heating; DHW; cooling; lighting; ventilation; auxiliary power

Life Cycle Analysis

Eco-design material : Verdello - Verdello® is the first 100% bio-sourced paint. An indoor wall paint with an extra matt finish for warm interiors and at one with the environment. Made from tall oil, Verdello® is an entirely natural paint that comes from the plant world.

Greenskin Box - Greenskin DVMH has developed and patented a range of green standardised, pre-assembled "ready to fit" roofs which are modular and customisable. It is a fully modular system, laid on pads which can be fitted on any type of flat or gently sloping roof.

Plant Box - Made of sphagnum and steel, Plant Box is used to build planted internal and external walls for a range of applications, both aesthetical and architectural. To date, more than 200 planted walls have been erected by the Plant Design company.

Woobago - Woobago's system and structures use 100% biodegradable raw materials and locally sourced products, with all that this implies in terms of quality and beneficial impact for the social and economic fabric of your region. Furthermore, these raw materials are rapidly renewable: bamboo, indigenous wood, straw and local clay.

CEMWOOD - CW2000 - CW2000 is a filling made of wood shavings with a mineral coating and defined cubic chip form. The special combination of materials allows the beneficial properties of the wood and mineral substances to be practically combined.

<https://www.construction21.org/luxembourg/data/sources/users/18/n-p1000-doc11-peintureobinfr.docx>

Water management

• 9m³ tank for sanitation and watering • Green roof • Collection pond • 3,000 litre collection tank for the planted walls and urban greenhouse

Comfort

Health & comfort : Neobuild wanted to pay particular attention to comfort and health issues in the building. For example, we avoided using construction materials which could be derived from substances that are harmful to the health of future occupants. For precisely this reason, the Neobuild Innovation Centre has several types of sensor which measure ambient humidity, light, temperature, VOCs and noise levels in order to analyse the impact of the materials on the air quality and on working conditions.

The shaft of natural light in the central corridor, the electrochromic glass and the height of the windows ensure an optimum amount of light for the comfort of the building's occupants. If there is too much light, each user can adjust the external blinds or the lights to their liking using their computer.

Similarly, a gym is provided for the health of employees. Anyone who wants to can use the electricity-generating bikes or take advantage of a cardio session held every Thursday and round-off their leisure time by using one of the showers provided.

In addition to the criteria of managing natural resources, energy-efficiency and respect for the environment, the building is guaranteed to be free from indoor pollutants and, therefore, it is guaranteed to protect the health of the employees working there. The Neobuild Innovation Centre demonstrates that health, energy and passive construction are fully compatible.

Calculated indoor CO₂ concentration :

1000 ppm / pièce - courbe de pettenkofer

Measured indoor CO₂ concentration :

Salle de réunion B.2.06 : 2078 ppm le 03/07/15 à 18h35 (max)

Calculated thermal comfort : Moyenne : 20°C

Measured thermal comfort : Bureau situé à l'extrémité du bâtiment : Minimum relevé 17.4°C le 29/12/14 à 10h18 / Maximum relevé 31.9°C le 05/07/15 à 18h31 -

Salle de réunion B.2.06 : Minimum relevé 18.5°C le 20/08/15 à 4h31/ Maximum relevé 33.5°C le 05/07/15 à 18h16

Acoustic comfort : An initial acoustic survey has been conducted to assess the insulation from internal and external airborne noise, equipment noise and impact and vibration noises. In total, 44 measurements were taken in 14 locations in the building. The values measured vary from 32dB (external airborne noise) to 62dB (equipment noise). Thanks to this survey, weak points have been identified and will be dealt with as far as possible.

Products

Product

SageGlass dynamic glazing

Buderus

info@buderus.lu

<http://www.buderus.lu>

Product category : Table 'c21_germany.innov_category' doesn't exist SELECT one.innov_category AS current,two.innov_category AS parentFROM innov_category AS oneINNER JOIN innov_category AS two ON one.parent_id = two.idWHERE one.state=1AND one.id = '18'

Window glass with a tint that can be electronically adjusted for new or renovated offices, schools or hospitals, for facades or glass roofs. SageGlass® provides comfort and energy savings by adjusting the its tint and controls the heat and glare of the sun by replacing traditional solutions such as blinds.

This innovative technology allows the glass roof to be retained in full whilst avoiding the need for an air-conditioning system or sunshades which are expensive to purchase and maintain.



Plant Box, by PlantDesign

PLANT DESIGN

Sébastien CREPIEUX - Tel : +32 473 193 323 - Mail : info@plantdesign.be

<http://www.plantdesign.be/fr/>

Product category : Table 'c21_germany.innov_category' doesn't exist SELECT one.innov_category AS current,two.innov_category AS parentFROM innov_category AS oneINNER JOIN innov_category AS two ON one.parent_id = two.idWHERE one.state=1AND one.id = '12'

Made of sphagnum and steel, Plant Box is used to build planted internal and external walls for a range of applications, both aesthetical and architectural. To date, more than 200 planted walls have been erected by the Plant Design company.

Out of the ordinary, this touch of greenery inside the building appeals to many!



Gyproc SoundBlock

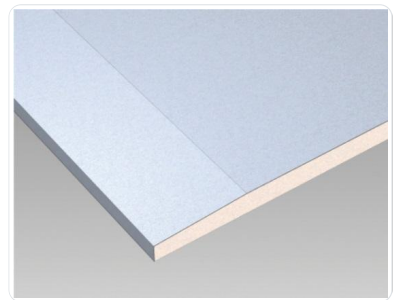
Gyproc

Michel LAMBERTS - Tel : +32 495 121 712 - Mail : michel.lamberts@saint-gobain.com

<http://www.gyproc.be/homepage/fr>

Product category : Table 'c21_germany.innov_category' doesn't exist SELECT one.innov_category AS current,two.innov_category AS parentFROM innov_category AS oneINNER JOIN innov_category AS two ON one.parent_id = two.idWHERE one.state=1AND one.id = '12'

Gyproc SoundBlock has very specific plaster core which ensures a high level of sound insulation. It has been developed in combination with the Metal Stud SoundBlock profiles to offer the highest levels of noise insulation on the market and it remains a very thin partition.



Activ'Air

Gyproc

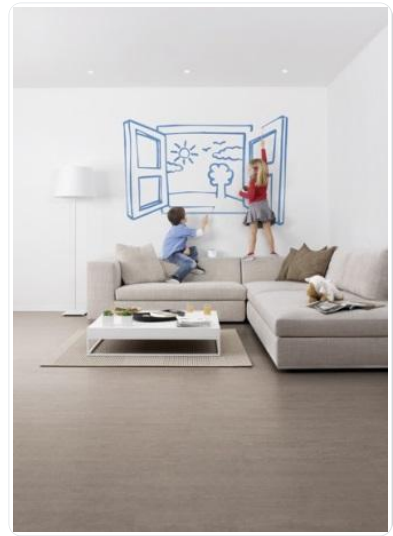
Michel LAMBERTS - Tel : +32 495 121 712 - Mail : michel.lamberts@saint-gobain.com

<http://www.gyproc.be/homepage/fr>

Product category : Table 'c21_germany.innov_category' doesn't exist SELECT one.innov_category AS current,two.innov_category AS parentFROM innov_category AS oneINNER JOIN innov_category AS two ON one.parent_id = two.idWHERE one.state=1AND one.id = '12'

Activ'Air® captures up to 80% of the main Volatile Organic Compounds (VOCs) and converts them into an inert compound. It creates a chemical reaction with formaldehydes and converts them into inert compounds without re-emitting them into the indoor air. Any aldehyde is thereby removed on contact with the Activ'Air® technology.

As air quality is still uncharted territory, this product has been put into service to test its effectiveness.



Enerlin'X Smartlink

Schneider Electric

Frederic Mames - frederic.mames@schneider-electric.com

<http://www.schneider-electric.fr/fr/product-range/61356-enerlin-x-smartlink/>

Product category : Table 'c21_germany.innov_category' doesn't exist SELECT one.innov_category AS current,two.innov_category AS parentFROM innov_category AS oneINNER JOIN innov_category AS two ON one.parent_id = two.idWHERE one.state=1AND one.id = '31'

The core of the Acti 9 Control system, the new modular smart Acti 9 Smartlink interface, sends the data from the Acti 9 devices to an automated controller or a monitoring system, using the Modbus serial line connection network.

All of the data are stored, such as number of cycles, consumption, running time, even in the event of a loss of power.

No configuration is required for the products connected.

The communication adapts automatically, when Acti 9 Smartlink is switched on, to the communication settings of the Modbus master (PLC, monitor).

Although the idea of a Smart Building is very well known in the press and in construction news, getting hold of equipment has not been easy. Schneider Electric has helped to consolidate smart concepts devised during the design stage.



DuPont™ Energain®

Dupont de Nemours Luxembourg

Laurent ZANUSSI - Tel : +32 475 866 861 - Mail : laurent.zanussi@dupont.com

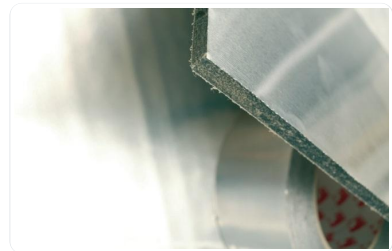
http://energain.fr/Energain/fr_FR/index.html

Product category : Table 'c21_germany.innov_category' doesn't exist SELECT one.innov_category AS current,two.innov_category AS parentFROM innov_category AS oneINNER JOIN innov_category AS two ON one.parent_id = two.idWHERE one.state=1AND one.id = '9'

DuPont™ Energain® is made of a polymer which contains a phase-change material (PCM) made of paraffin wax.

It means that excess heat in a room can be absorbed when the temperature rises and, conversely, can be returned when the indoor temperature falls.

This product is traditionally placed behind a plasterboard but in the NIC this product has been placed in the ceiling to test its effectiveness in this location. As a result, it has not been the success it deserved.



VELUX modular glass roofs

VELUX

Philippe Walczynski - Tel : +32/476-222307 - Mail : phw.v-b@velux.com

<http://www.velux.fr/>

Product category : Table 'c21_germany.innov_category' doesn't exist SELECT one.innov_category AS current,two.innov_category AS parentFROM innov_category AS oneINNER JOIN innov_category AS two ON one.parent_id = two.idWHERE one.state=1AND one.id = '10'

A unique design, with new materials with even better energy efficiency. The new modular VELUX glass roofs are a game-changer for the commercial roof glazing market. For the first time, the sector can boast a full pre-fabricated glass roof design.

This glass roof have provided enough light for the planted wall. It is relatively easy to use and install. However, there were restrictions on purchasing it because the minimum size is not the same, depending on the country where the order is placed.



Ice store

Viessmann / Isocal

François Siméon - Tel : +352 661300036 - Mail : simf@viessmann.com

<http://www.viessmann.lu/>

Product category : Table 'c21_germany.innov_category' doesn't exist SELECT one.innov_category AS current,two.innov_category AS parentFROM innov_category AS oneINNER JOIN innov_category AS two ON one.parent_id = two.idWHERE one.state=1AND one.id = '18'

The "ice store" is a buffer store of solar energy, outdoor air, ground energy and other natural resources. By using the latent heat of the water, this system supplies the primary energy required for the heat pump to work throughout the heating season with no well!

This idea, which is as old as time, has re-emerged with precisely-scaled systems. The implementation and optimisation times are quite long. We have not been completely satisfied but it remains a promising product.



Greenskin Box®

Greenskin DVMH

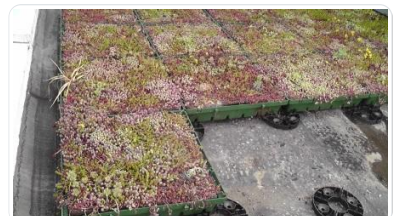
Denis LEJOSNE - Tel : +33 6 46 79 07 21 - Mail : d.lejosne@beta-messtechnik.de

<http://www.greenskin.be/>

Product category : Table 'c21_germany.innov_category' doesn't exist SELECT one.innov_category AS current,two.innov_category AS parentFROM innov_category AS oneINNER JOIN innov_category AS two ON one.parent_id = two.idWHERE one.state=1AND one.id = '16'

Greenskin DVMH has developed and painted a range of green standardised, pre-assembled "ready to fit" roofs which are modular and customisable. It is a fully modular system, laid on pads which can be fitted on any type of flat or gently sloping roof.

This system is innovative and is absolutely ideal for small spaces. As well as offering additional functionality for the roof, this system adds an economic and social benefit for the building.



ISOTEX

ISOTEX

Yannick VILLEGAS - Tel : +352 661 163 910 - Mail : villegas.yannick@orange.fr

<http://www.isotexfrance.com/>

Product category : Table 'c21_germany.innov_category' doesn't exist SELECT one.innov_category AS current,two.innov_category AS parentFROM innov_category AS oneINNER JOIN innov_category AS two ON one.parent_id = two.idWHERE one.state=1AND one.id = '6'

Wood-cement construction products, environmentally friendly, blocks and floorings.

To start with, the workers were resistant to this new material because they weren't used to wooden materials. The first two rows which were laid helped them to see that it is similar to fit to concrete blocks and that it was much more comfortable to handle thanks to the wood.



Woobago

cycl'home

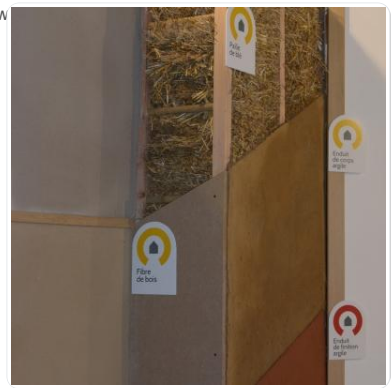
Serge Gosset

<http://www.cyclhome.com/woobago.html>

Product category : Table 'c21_germany.innov_category' doesn't exist SELECT one.innov_category AS current,two.innov_category AS oneINNER JOIN innov_category AS two ON one.parent_id = two.idWHERE one.state=1AND one.id = '9'

Woobago's system and structures use 100% biodegradable raw materials and locally sourced products, with all that this implies in terms of quality and beneficial impact for the social and economic fabric of your region. Furthermore, these raw materials are rapidly renewable: bamboo, indigenous wood, straw and local clay.

As straw is not very widespread in innovative construction, it attracts a lot of curiosity from visitors in the experimental connection area.



Foobot

foobot

Gwen Lasbleiz : gwen@foobot.io

<http://foobot.io/>

Product category : Table 'c21_germany.innov_category' doesn't exist SELECT one.innov_category AS current,two.innov_category AS parentFROM innov_category AS oneINNER JOIN innov_category AS two ON one.parent_id = two.idWHERE one.state=1AND one.id = '13'

Foobot is a smart online device which can measure air quality in the home. It makes a number of claims: tracking allergy-causing particles, keeping chemical components under control which stem from our mobile devices and controlling the correct temperature and humidity level to create a more pleasant living space for the whole family.



A new arrival on the market, this additional piece of equipment helps to consolidate and cross-check the results obtained using the various different air sensors included in the rooms.

BEN-Q

<http://benq.eu/>

info@solar-center.lu

<http://benq.eu/>

Product category : Table 'c21_germany.innov_category' doesn't exist SELECT one.innov_category AS current,two.innov_category AS parentFROM innov_category AS oneINNER JOIN innov_category AS two ON one.parent_id = two.idWHERE one.state=1AND one.id = '3'

The solar panels which use back contact technology are made of single-crystal solar cells which are currently considered to be the best technology on the market. These cells have the notable feature of generating a very high load voltage, even in high temperatures and provide an excellent load input even with very low irradiance.

As solar panels are already a well-known product, it was straight-forward to incorporate them.



CEMWOOD

CEMWOOD

Carlo Posing - Tel : +352 691 816757 - cp@rms.lu

<http://www.cemwood.de/en/>

Product category : Table 'c21_germany.innov_category' doesn't exist SELECT one.innov_category AS current,two.innov_category AS parentFROM innov_category AS oneINNER JOIN innov_category AS two ON one.parent_id = two.idWHERE one.state=1AND one.id = '9'

CW2000 is a filling made of wood shavings with a mineral coating and defined cubic chip form. The special combination of materials allows the beneficial properties of the wood and mineral substances to be practically combined.



Putting this material into service beneath a screed posed a number of questions for the companies. However, the implementation phase was particularly appreciated by the workers and, after one year in service, the results are still very positive.

SportsArt ECO-POWR™

SportsArt Fitness

Giorgio Gervasoni g.gervasoni@gosportsart.ch

<http://gosportsart.com/>

Product category : Table 'c21_germany.innov_category' doesn't exist SELECT one.innov_category AS current,two.innov_category AS parentFROM innov_category AS oneINNER JOIN innov_category AS two ON one.parent_id = two.idWHERE one.state=1AND one.id = '13'

The SportsArt machines can convert human effort into electricity and return it directly to the network. These 3 machines have been connected in series and can aggregate their generation. As for the power generated, it all depends on the effort. Gently pedalling generates around 30W whereas a fit male athlete at full exertion can generate up to 400W.

An integral part of the gym, this product contributes to the well-being of the company's employees by promoting cohesion within the group. In addition, it generates power for the building, which adds to its energy self-sufficiency. This innovation can find a place with companies that promote technologies which make the building more comfortable and sustainable.



Fuel cell

Saint-Gobain Int. AG

François Pigeolet - Tel : +32 478 495 774 - Mail : francois.pigeolet@saint-gobain.com

<http://sageglass.com/fr/>

Product category : Table 'c21_germany.innov_category' doesn't exist SELECT one.innov_category AS current,two.innov_category AS parentFROM innov_category AS oneINNER JOIN innov_category AS two ON one.parent_id = two.idWHERE one.state=1AND one.id = '10'

An innovative technology for a single-family house, generating heat and electricity at the same time. At 45%, the efficiency in electricity generation mode is particularly favourable.

The Neobuild platform is fully aligned to demonstrate this new technology as part of the European ene.field projects.



Costs

Construction and exploitation costs

Renewable energy systems cost : 750 000,00 €

Urban environment

The building is located in the Krakelshaff business park, 500 metres from the Bettembourg railway station. It is served by a bus route between the business park and Bettembourg station. The company's restaurant, located in the basement of the IFSB building, provides catering for staff in the business park.

Land plot area

Land plot area : 2 423,00 m²

Built-up area

Built-up area : 23,00 %

Green space

Green space : 120,00

Parking spaces

Car parking is shared with IFSB.

Permeable car park with space for 150 cars.

Building Environmental Quality

Building Environmental Quality

- Building flexibility
- indoor air quality and health
- biodiversity
- consultation - cooperation
- acoustics

- comfort (visual, olfactive, thermal)
- waste management (related to activity)
- water management
- energy efficiency
- renewable energies
- maintenance
- integration in the land

Contest

Reasons for participating in the competition(s)

Since this is a real laboratory incorporating over 100 different materials, products and systems, this 2,200 m² high technology, “nearly zero energy” building is extremely impressive. Both experimental and educational, it offers many possibilities for monitoring and full-scale tests.

The Neobuild Innovation Centre, as a proper LivingLab, incorporates many innovative technologies, such as the Neostein® project, developed by IMSIM, which is a learning pathway for the building.

This is a living building which can keep evolving, not only according to the needs of its occupants – companies which have the opportunity to learn about new materials and innovative technologies and introduce others to them – but it is also a building which is constantly moving forwards as it strives to comply with natural and necessary environmental requirements.

It is for these reasons that the Neobuild Innovation Centre is an excellent candidate for these four categories.

Bio-based and recycled materials

By using for the most part solid wood, cellulose, cement particle board, stone aggregates, wooden cladding and 100% bio-based paint, we are very well positioned to support the Greater Region’s commitment to bio-based materials.

Renewable Energies

Geothermal drilling, ice tanks, buried containers and thermal solar panels provide various sources of renewable energy to supply the building’s three heat pumps. These pumps get their electricity from seven solar panel systems and from the greatest inexhaustible energy system available – human energy input.

Health & Comfort

One of the main concerns underlying the project was the comfort of those using the building. To get this right, the concept of “comfort” had to be defined for everyone concerned. After a few interviews, a compromise was reached that took into account both comfort and the environment. Today, each person using the building can enjoy a bright, functional space while at the same time accepting that summer temperatures have to be managed by adapting their behaviour and not by using an air-conditioning system. Using materials that naturally regulate humidity in the rooms, suitable ventilation and safe materials such as eco paints and formaldehyde-free adhesives has ensured that there is plenty of clean air for the people using the building. This air is regulated by numerous sensors which alert the building manager should there be any malfunction. In conjunction with this regulation system, satisfaction surveys are carried out on a regular basis to ensure that the needs of those using the building are being met, needs which constantly change and develop.

Smart Buildings

It is possible to monitor the building and its technical installations rigorously because there are over 1,500 sensors with multiple functions, which makes the building fully in line with its primary functional capabilities. Moreover, the technologies which have been installed make top-level load-shedding possible. The building’s “smart” aspect is also supported because the people using it are aware of it, have taken the concept readily on board and want to play an active part in its development.

Building candidate in the category



Matériaux bio-sourcés et recyclés



Energies renouvelables

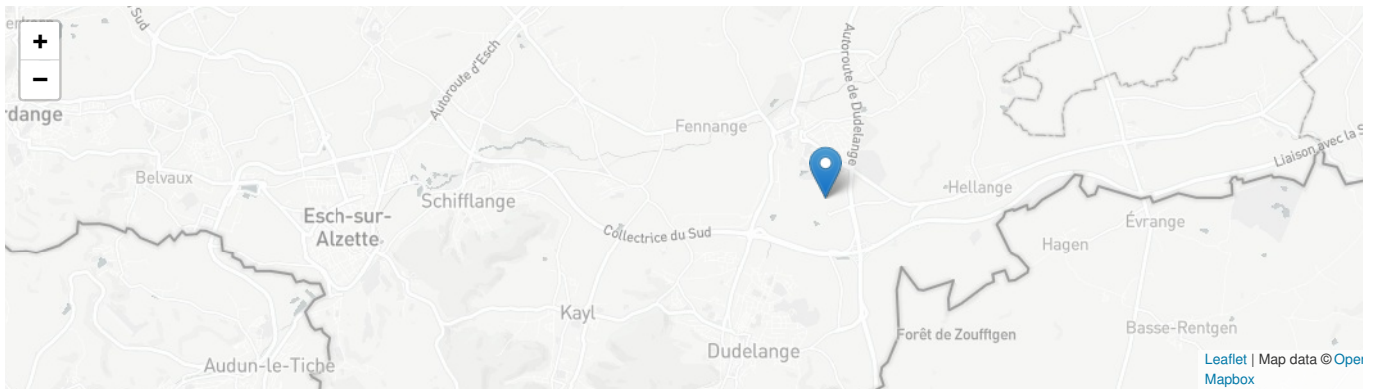




Smart Buildings



Santé et confort



Date Export : 20230618101946