

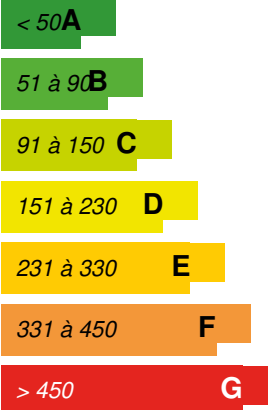
233-2

/ 2019-06-23 17:54:21 / China / 2189 / CN



19.03 kWhpe/m².

(:)



: 50

: 2012

: 2014

1- : 215028 ,

: [Dfb]

: 155 243 m² Other

/ : 559 304 600 ¥

/m² : 3602.77 ¥/ m²



“ ” “ ” “ ” “ ”

III III I II

28 II 50 6

80% 50% 10% 30% 30% 2 “ ” “ ” “ ” 28

1

2



3

30%

4

7°C-8°C 40%-60%



:

: 15150682127 1106361578@qq.com

<http://www.coli688.com>

· 233-2

80% 50% 10% 30% 30% 2

“ ” “ ” “ ”

28

93686 1.0 15.52 50.47% 29.87% 124 150
5500

6 50

“ ” · 233-2

“ QC ” “ QC ” “ QC ”
“ ”

“ ” “ ”



: 19,03 kWhpe/m².

: 27,64 kWhpe/m².

:

: 24,64 kWhfe/m².

:

B1H 13/59Kwh/m2/year

E02H 5.44Kwh/m2/year

Hikom

29.4kw

31.2kw

35kw

37kw

7.2/12°C

,

40/45°C

70%

0.9

100% 100%
 70W/ 688.56 48199.2W 8 4 290W 4 46W
 $4 \cdot 290 + 4 \cdot 46 / 48199.2 = 2.79\% \quad 2\%$

U : 0,54 W.m⁻².K⁻¹

:

1 10.0mm + 20.0mm + () 35.0mm + 2.0mm + 10.0mm + (XPS)(ρ=25)
 75.0mm + 120.0mm 0.70
 2 15.0mm + 30.0mm + 3.0mm + 30.0mm + ()
 35.0mm + 2.0mm + 10.0mm + (XPS)(ρ=25) 75.0mm + 120.0mm 0.70
 3.0mm + 5.0mm + (EPS)(ρ=18) 30.0mm + 10.0mm + ((B06)
 200.0mm + 20.0mm 0.50
 3.0mm + 5.0mm + (EPS)(ρ=18) 30.0mm + 10.0mm + 200.0mm +
 20.0mm
 3.0mm + 5.0mm + (EPS)(ρ=18) 30.0mm + 10.0mm + 200.0mm +
 20.0mm
 120.0mm + (EPS)(ρ=18) 30.0mm + 5.0mm + 3.0mm 0.50
 20.0mm + ((B06) 200.0mm + 20.0mm
 20.0mm + 120.0mm + 20.0mm
 (5+12A+5) 3.20W/m²·K 0.84 6 0.40

: 0,43

: 4,00

<https://www.construction21.org/china/data/sources/users/195/zoooooooooooooooozs2.doc>

/ : 19,03 kWhfe/m².

: 2 013

:

o



:

o

:

o

:

o

:

o

o

: 50,00

:

PVC

“ ”

BMS) :

1

1

2

IC

3

4

2

3

1

2

3

4

5

6

:

:





:

1 50%

2

3

4

<https://www.construction21.org/china/data/sources/users/195/zzzzzsz7.docx>

: 15 000,00 m³

/m² : 0.1

/ : 23.55

10%

10%

CJ164-2002

1

CJ164-2002

1

6L

2

0.1MPa

15mm

0.15L s

2s

3

0.1MPa

15mm

0.15L s

2

1

PE

2

30%

30%

— — —

CO2 mg/m3 700mg/m3

mg/m3 0.04mg/m3

TVOC mg/m3 0.1mg/m3

mg/m3 0.04mg/m3

PM2.5 $\mu\text{g}/\text{m}^3$ 8mg/m3

“ ” “ 80% 50% 10% 30% 30% ”

“ ” “ ”

“

”

“ ”

“ ”

“ ”

()

()

,

,

:

12°C 45%

26°C 60%

()

40—70%

:

	AN	55dB~65 dB	46dB
41dB			



brand@micoe.com

<http://www.micoe.com/>

:

4.0m², 200L

;

;



<http://szerengy.cn.coovee.net/>

:

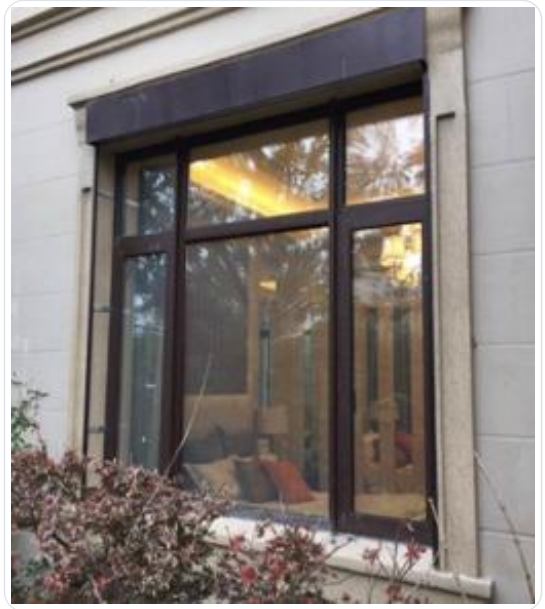
7°C-8°C 40%-60%



:

34%

60%



:

0.2 EO



:

1

2 SMC SMC

“ ” 60kg/c , 6

“ ” 2 1



876782078@qq.com

<http://www.airhikom.com/index.html>

:

1 400

47% 500

2 COP 4 1KWh 4KWh [1]

3

4

5

■ 地源热泵空调系统通过地下水换热，从地下垂直埋管环路中吸收低品位热能，再借助压缩机系统将低品位的能量提升为高品位的能量，冬季产生45-50℃的热水，可以用于地板采暖、风机盘管等设施进行采暖，并且可以提供生活热水。夏季产生5-10℃的冷水供应室内空调。



: 559 304 600 ¥

: 559 304 600 ¥

¥

/ : 191 000,00 ¥

t/m² : 1.23

/ : 299.84



46

: 93 686,00 m²

: 42 158,70

717 1:2
IC



2
3
4

