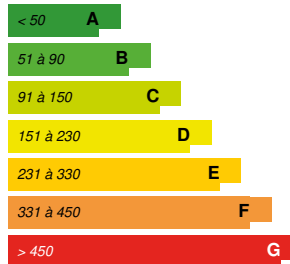




36.97 kWhpe/m².

(:)



: 50
 : 2016
 : 2018
 1- : 200137 ,
 : [Dfb]

: 16 994 m² Other
 / : 186 930 000 ¥
 /m² : 10999.76 ¥/ m²

13433 16994 3 5

- a) 49%
- b)
- c)
- d)
- e)

- a) 50mm 100kg/m³
- b)
- c)
- d)

- a)
- b) 0.2-0.35Mpa
- c)

- a)
- b)

- a)
- b) 3.0 VOC PM2.5
- c) 40-45 30-35

- 2-3
-
- $\leq 2.5\text{m/s}$,



:
: liyali@landsea.cn
<http://www.landsea.cn>

3.0
3.0
3.0
3.0
3.0

“ ”

USB

VOC PM2.5



: 36,97 kWhpe/m².
: 46,97 kWhpe/m².
:
: 36,97 kWhfe/m².
:

18.72Kwh/m2/year
18.25Kwh/m2/year

: 86,35 kWhpe/m².

U : 0,39 W.m².K⁻¹

:

0.32W/ m2 k

0.39W/ m2 k

/// 1.2/1.3/1.2/1.4W/ m2 k

2 W/ m2 k

: 0,32

: GB/T 7106-2013

: 6,00

BMS) :

PM2.5

:

: 37,05 KgCO₂/m²/

:

CECS 374 2014

: 139,78 KgCO₂ /m²

: 40,00

, xx : 3.77

: 10 950,00 m³

/m² : 0.64

/ : 146

0.2-0.35Mpa

CO2 mg/m3 990

mg/m3 0.025

TVOC mg/m3 0.21

mg/m3 0.006

PM2.5 μg /m3 9.2 2017 PM2.5 38μg/m3

3.0

ASS 70 HI

- E-Slide:
- (108mm)
- WK2
- 9A, $U_f < 1.8(W/m^2K)$ $U_w < 1.3(W/m^2K)$

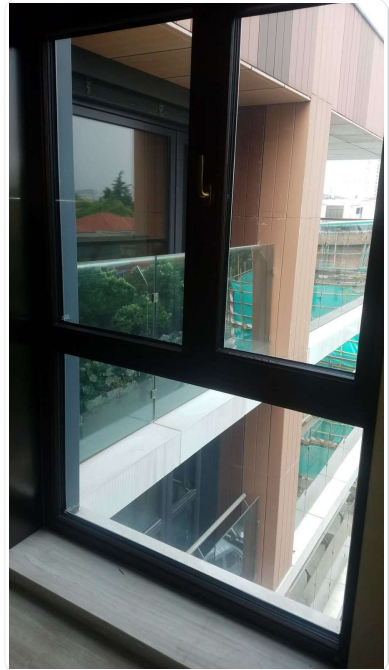


28 4

<http://www.sayyas.com>

- 70%
- LOW-E
- 0.002 /

LOW-E



51 2 7

<http://www.landleaf-tech.com/>

- $\rightarrow \rightarrow \leq 0.03 mg/m^3$ S1
- S1 $\leq 0.03 mg/m^3$
- VOC

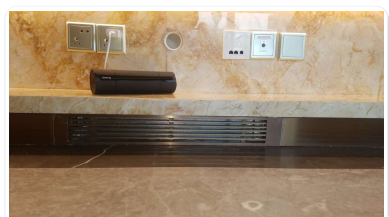


108

<http://www.landsea.cn>

: HVAC /
2.8

- 10cm



-
-
-

Clina

info@clina.de

<http://www.clina.de/>

:

8°C 71.4 W/m²
 OPTIMAT SB 20.11 20 mm 4.3 x 0.8 mm KNAUF MP 75 10 mm 50 mm WLG
 040



mao.huiyu@vtsgroup.com

<http://vtsgroup.com>

: HVAC /

G4 + +H11 PM2.5 99% 70% 10
 PM2.5 PM10 CO2



¥

/ : 351 000,00 ¥

t/m2 : 20.65

/ : 4680

— 15 30 2 10 1.5 0.5

: 13 433,00 m²



“ ”

—4 & & & 15 & & & & & & & & S1 & & & &24h &

