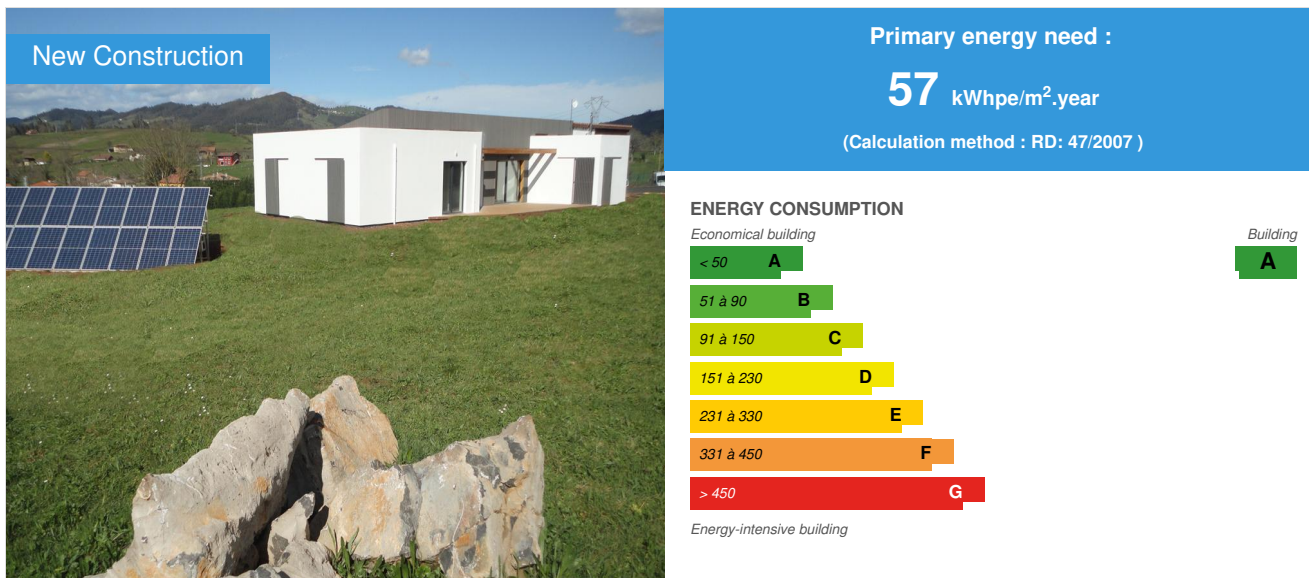


Disconnected Tuernes Passivhaus

by Marcos Baptista / 2017-05-30 00:00:00 / España / 11564 / ES



Building Type : Isolated or semi-detached house
Construction Year : 2016
Delivery year : 2016
Address 1 - street : 33425 LLANERA, España
Climate zone : [Cfc] Marine Cool Winter & summer- Mild with no dry season.

Net Floor Area : 193 m²
Construction/refurbishment cost : 289 000 €
Number of Dwelling : 1 Dwelling
Cost/m2 : 1497.41 €/m²

Certifications :



Proposed by :



General information

Detached detached house, without connection to the electric network (without invoice !!!). Designed under Passivhaus criteria in the process of being certified as Passivhaus Plus, low environmental impact with zero emissions. To achieve this, we have worked from a variety of perspectives:

- Architecture: design as a savings tool, passivhaus concepts.
- Construction: sustainable and respectful with the environment, with execution time of 8 months, industrialization of the construction process.
- Environmental engineering: analysis of CO2 emissions.
- Efficient installations: equipment of low consumption and high efficiency for ventilation, heating and lighting taking its dependence to the minimum expression.
- Renewable energy: photovoltaic electricity production with zero consumption objective. On the other hand, biomass as a non-fossil fuel and CO2 emission neutralized for the winter period.

- Domotic: monitors, manages and reduces consumption, facilitating the control of all this at a distance for both the user and the installation companies.

See more details about this project

<http://www.ecoproyectosweb.com/trabajos/unifamiliar-passivhaus-renovables>

Data reliability

Self-declared

Stakeholders

Stakeholders

Function : Designer

ECOproyectos

Marcos Baptista Riesgo

<http://www.ecoproyectosweb.com>

Development of previous studies for Passive housing with maximum final cost commitment and energy efficiency objective. Drafting of architectural projects. Project Management and Project Manager.

Contracting method

Other methods

Owner approach of sustainability

The project starts from a basic premise, optimizing the design both for the control of running costs and for the costs of use, enjoyment and maintenance, with a goal: zero emissions housing.

Architectural description

DESIGN: as a saving tool. Based on the needs of a specific functional program and defined by the future users, an initial distribution scheme based on a central space, the housing lung, is proposed, which will concentrate the day activities benefiting from a 360° relation to the exterior. In those places where it is linked with the rest of stays, its height will surpass them in order to be able to maintain at least a visual and luminous link towards the outside. Clear and dynamic spaces, and minimal paths. From there, the passive design begins to work, the detailed study of the geometries and composition of the thermal and constructive envelope finish to generate the final composition whose thermal load of heating is inferior to 15w / m2. All the geometry has been modeled and analyzed to obtain the best performance taking advantage of the solar radiation as well as heat or light load. CONSTRUCTION: sustainable and respectful towards the environment. Wood is chosen by its balanced environmental impact, its ease of industrial machining, the recyclability, the maneuverability, the transformation, and especially its low thermal conductivity make that it is the base element of the constructive nucleus, sometimes hidden and others in sight. All this to achieve an adaptive constructive system that allows to cover with assurances the diverse needs that today demands a housing (structural, thermal, acoustic, hygrometric, energy, aesthetic, etc ...) with automated processes that favor the profitability of the execution. ENVIRONMENTAL ENGINEERING: analysis of CO2 emissions under UNE standards to confirm a final net impact or even negative neutralizing more CO2 than it is emitted. For this, the design, the materials, the logistics, the construction process, and the lifespan of the house are evaluated. EFFICIENT FACILITIES: incorporation of equipment of low consumption and high efficiency for ventilation, heating and lighting taking its dependence to the minimum expression. Dual-flow ventilation systems with heat recovery and post-heating allow to unify heating and ventilation under a single system sized so that the thermal load is provided by the volume of renewal air. RENOVABLES: Given the current situation of photovoltaic components that present an advanced development with high guarantees and the lowest production costs in its history, we can now begin to propose its integration in projects of net balance or close to zero consumption. It is a question of seeking a support system that guarantees a reduction of the electric bill that amortizes its investment pending the future regulatory changes towards a net balance. On the other hand biomass as a non-fossil fuel and neutralized CO2 emission, renewable fuel for ACS and CLF, with a reduced use mainly to the winter period and point moments where the solar radiation is minimal. The implantation of a photovoltaic system for the electric power of the house dimensioned for the winter conditions generates surpluses, especially summers in summer that are derived to the ACS system by means of resistances. DOMOTICS: a component that in this case adopts an essential participation in the whole. It is the system that monitors, manages and reduces consumption, facilitating the control of all this at a distance for both the user and the installation companies. Simple functions such as control of lighting, ventilation and heating depending on occupancy automatically, elimination of residual consumption or stand by, automation of sun shades or blinds, etc ... substantially reduce energy demand and consequently the profitability of the joint solution.

Energy

Energy consumption

Primary energy need : 57,00 kWhpe/m².year

Primary energy need for standard building : 225,00 kWhpe/m².year

Calculation method : RD: 47/2007

CEEB : 0.0006

Breakdown for energy consumption :

Heating demand: 7 kWh / m²a, Heating load: 9 W / m², Demand cooling: 0 kWh / m²a

Envelope performance

Envelope U-Value : 0,15 W.m⁻².K⁻¹

More information :

Floor: 0.175 (W / m²k), Facade: 0.153 (W / m²k), Roof: 0.193 (W / m²k)

Indicator : n50

Air Tightness Value : 0,40

Real final energy consumption

Year of the real energy consumption : 2 017

Renewables & systems

Systems

Heating system :

- Wood boiler

Hot water system :

- Solar Thermal
- Wood boiler

Cooling system :

- No cooling system

Ventilation system :

- Nocturnal ventilation
- Double flow heat exchanger

Renewable systems :

- Solar photovoltaic
- Biomass boiler

Renewable energy production : 98,00 %

Isolated photovoltaic collection system with lithium batteries:

☑ Photovoltaic field: 8,480 Wp. 32 Panel Rec Solar Twinpeak 265 Wp 17,3% Efficiency. Partial shading module, award winning system in Intersolar 2.015.

☑ Structure: aluminum with stainless steel screws A2.

☑ CC protections: 2 watertight protective and surge arresters with safety cut-off switch in continuous position in photovoltaic field

☑ Regulator charging: 2 MPPT 300-450 V units, short-circuit current 22 A.

☑ Inverter: 2 DC units 48-300 V, maximum discharge current 50 A, AC output 230 V, nominal current 13 A x 2.

☑ Power output: nominal 6 kW / 30 minutes 7 kW / 2 minutes 7.8 kW / 3 seconds 10.1 kW

☑ Battery: 4 units of 3 kWh Li-ion, max. 95% with number of discharge cycles greater than 6,000, associated useful life of more than 15 years. Non-sequential fast loading lead-acid type, gel, etc ... Total capacity available and available 12 kWh.

☑ Input Red / Generator: 230 V, maximum current 52 A, 11.5 kW.

☑ Generator support: inverter soundproof 2.5 kW.

☑ Management: application and monitoring via Android and iOS. Direct and continuous connection via internet with technical service.

Smart Building

BMS :

Home automation systems for the connection and disconnection of standby and unnecessary consumptions, control and luminous adjustments. Deviation of loads against photovoltaic surplus for the production of ACS and activation of consumption equipment.

Products

Product

Photovoltaic panel

Rec

Ecoproyectos

<http://www.recgroup.com/en>

Product category :

The building where this installation takes place has an average daily winter consumption of 10 kWh. For this reason, the dimensioning of the photovoltaic collection and storage tries to guarantee a total coverage and without dependence of the generator in 96% of the days of the year according to the data of the last annual record for the location of the action.

The system covers 100% of the electric demand as long as the solar radiation exceeds 1.2 kWh / m².



This housing disconnected from the electricity grid has a photovoltaic field on a hearth composed of thirty two photovoltaic panels as described.

Photovoltaic Batteries

Ampere energy

cpaya@ampere-energy.com

<http://www.ampere-energy.es/>

Product category :

A new scheme is proposed in front of the traditional scheme of photovoltaic plate connected through a regulator to batteries and these, in turn, linked to an inverter depending at all times of the storage with associated losses and the wear of the same.

As long as there is demand for electric energy and solar radiation, it is passed directly from the inverter to the interior of the house, avoiding dependence on the use of batteries, increasing the efficiency of the system to 95-97%. Whereas in traditional systems this efficiency does not exceed 70%.

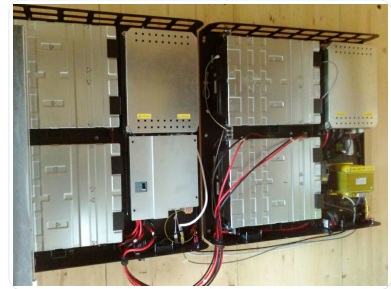
When the demand is higher than the solar input the management unit takes 100% of the solar production and completes the necessary rest with the stored in the batteries.

When the production is higher than the demand the surplus goes directly to be stored. In this particular case given the size of the photovoltaic field, with a radiation of 4-5 kW / m², typical of sunny days, even in winter, we could completely fill the batteries installed due to linear loading without front stabilization processes To the traditional employees hitherto.

When the solar resource is null, the system becomes completely dependent on the batteries, being able to discharge them up to 95% of its capacity without affecting its warranty and useful life. At that point, even beforehand, with a certain margin, according to the one indicated by the user, the system will notify us the lack of reservations. In this situation depending on the installed generator can activate an automatic start or manual to give the load that we need until the recovery of solar radiation.

It allows to see the state of charge of the device, to consult the consumption and see the electricity price of the electricity grid and monitor the power generation of the photovoltaic panels, all with the option of visualization in real time. The additional schematic mode to display information from the latest (most recent) record in a dynamic and simple way. It also includes a history for past queries of all the options, so you can quickly access them and track status changes.

You also have the possibility to have several computers controlled from the same application, turn off or switch on electrical devices remotely from your mobile and even configure informative alerts.



Controlled mechanical ventilation with heat recoveror

Siber

<https://www.siberzone.es/>

<https://www.siberzone.es/>

Product category : HVAC /

Renovent Excellent 300 4/0 (3/1) (Plus). Controlled mechanical ventilation machine with certified Passivhaus heat recuperator. Yield 84%

Thanks to this product we not only achieve energy savings but also a clean and free of impurities.

Pellet boiler

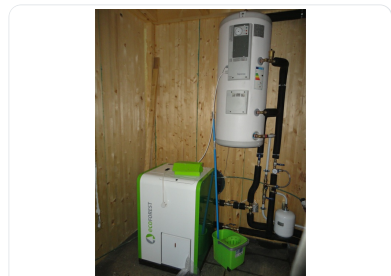
Ecoforest

eloy@ansoltec.com

<http://www.ansoltec.com/>

Product category : HVAC /

The boiler is placed in the room of installations and emits through water radiators that are placed embedded in the partitions



Costs

Construction and exploitation costs

Global cost : 367 466,00 €
Reference global cost : 1 443,00 €
Renewable energy systems cost : 152,00 €
Global cost/Dwelling : 367466
Reference global cost/Dwelling : 1443
Cost of studies : 2 845 €
Total cost of the building : 288 722 €

Energy bill

Forecasted energy bill/year : 320,00 €
Real energy cost/m2 : 1.66
Real energy cost/Dwelling : 320

Urban environment

The ground where this construction takes place, locally known as La Muria, is located on the edge of the neighborhood road about 100 meters from the main road of Tuernes. It is surrounded by dispersed single-family buildings, with a varied aesthetic, dissonant, predominating the rustic properties not built. The plot presents a considerable increasing slope from north to south, with percentage in some points of 15%. At the highest part of the plot to the south, any visual reference to the environment is lost, while the north orientation shows a wide and detailed view of the foreground and background environment. The climate is warm and temperate in Posada de Llanera. There is rain throughout the year at Posada de Llanera, and even the driest month still has a lot of rain. According to Köppen and Geiger climate is classified as Cfb. The average annual temperature in Posada de Llanera is 13.3 ° C. There are around 852 mm of rain.

Land plot area

Land plot area : 4 550,00 m²

Built-up area

Built-up area : 201,00 %



Building Environmental Quality

Building Environmental Quality

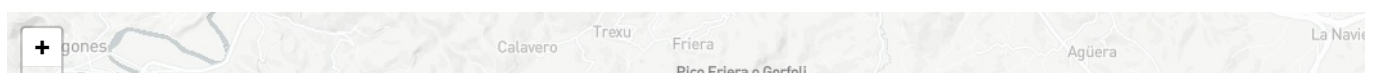
- Building flexibility
- indoor air quality and health
- energy efficiency
- renewable energies
- building process

Contest

Building candidate in the category



Energía & Climas Temperados





Date Export : 20230615215141