


Project 55

by Elie Delvigne / 2014-12-01 07:44:42 / Belgique / 18482 / FR



Extension + refurbishment

Primary energy need :

53 kWhep/m².an

(Calculation method :)

ENERGY CONSUMPTION

Consumption Range (kWhep/m ² .an)	Grade	Category
< 50	A	Economical building
51 à 90	B	Economical building
91 à 150	C	Economical building
151 à 230	D	Economical building
231 à 330	E	Economical building
331 à 450	F	Economical building
> 450	G	Energy-intensive building

Building **A**

Building Type : Office building < 28m
Construction Year : 2014
Delivery year : 2016
Address 1 - street : 55 Boulevard Albert Elisabeth 7000 MONS, Belgique
Climate zone : [Cfb] Marine Mild Winter, warm summer, no dry season.

Net Floor Area : 210 m² Other
Construction/refurbishment cost : 349 000 €
Number of Work station : 18 Work station
Cost/m² : 1661.9 €/m²

Proposed by :



General information

55 The Project consists of the renovation of a mansion, listed on the Heritage Inventory, in the center of the city of Mons (7000) as the "zero-energy" standard. In addition to high energy performance, eco-materials, sustainable water management, sustainable mobility, comfort and well-being of the occupants, etc. are among the many aspects of the project.

By combining these themes to local businesses, the project aims to be an example and a positive image of the region. This will be the first certified zero-energy renovation of Belgium (PMP confirmation to 07.14.2014).

The building will house the offices of the company and will serve as Homeco place of visit and training in sustainable development techniques.

Finally, the project has already received several awards: "exemplary building in 2013" by the Walloon Region, Wallonia check Creativity by Design "renovation of 20 stories" by the Eco-building cluster, etc.

Retrouvez Projet 55, lauréat du Grand Prix Rénovation Durable des Green Solutions Awards 2017, en vidéo



Building users opinion

The building is actually occupied in September 2015. During the severe heat in May (a few days), the building remained very fresh.

If you had to do it again?

During a renovation, the "surprises" are inevitable: discovery of rotten frames, discovering unexpected details, etc. If it again, we will work even more technical details with the contractor upon discovery of these elements.

See more details about this project

<https://www.construction21.org/belgique/articles/be/laureat-grand-prix-renovation-durable-des-green-solutions-awards-2017-projet-55-belgique.html>

<http://www.homeco.be/projet-55>

Data reliability

3rd part certified

Stakeholders

Stakeholders

Function : Construction Manager

Homeco

Delvigne Elie - 0474/833.777 - elie.delvigne@homeco.be - www.homeco.be

<http://www.homeco.be>

Function : Thermal consultancy agency

Homeco

Delvigne Elie - 0474/833.777 - elie.delvigne@homeco.be - www.homeco.be

<http://www.homeco.be>

Study PHPP, dynamic simulation and technical details

Function : Designer

Bachelart-Delvigne architectes

bachelart.xavier@gmail.com

Contracting method

Separate batches

Owner approach of sustainability

We have the distinction of being on this project prime contractor, architect and thermal design office. Our goal is twofold: -the company needed new offices and we want to provide a healthy and comfortable working environment for workers (those of society and those who will come in training); - demonstrate individuals and professionals (architects and contractors) the ability to achieve energy performance (very) high in buildings, including renovation. This will allow us to disprove many misconceptions about this type of project or energy standard. In this sense, it is our first building "green" or at least "exemplary" on so many themes (energy, green materials, comfort, soft mobility, etc.). Compared to our other projects, new construction and renovations, the main difference results in the overall consideration of all these issues.

Architectural description

First, we had to find the front facade architectural coherence. Indeed, as indicated in the project description, the front part, with five other neighboring buildings, the same group enrolled in the Heritage Inventory. The facade had to regain its original look. This required: -the treatment of the facade of brick; -The placement of a new balcony and retrieve frame says "T". We have not chosen to make a "copy - paste" from the neighboring facades, we

wanted the procedure performed contemporary façade also marks, especially for the second point mentioned above. On window frames, light structures simply apply before the windows reappear and make the expression "T" with original chassis. These elements are removable and do not interfere in the energy performance of the frame itself. We find the central rotating elements to the balcony level. The various configurations of these plates are used to animate the entire facade. Metal structures set up received awards for Creativity by Design Wallonia! On the inside, we opted for flexibility. Our buildings need to be flexible to evolve over time and adapt to the needs of the occupants and without excessive additional costs. The building was previously a single family dwelling and collective dwellings, it is now renovated into offices and we do not know what will be its future function: housing (s), offices, commerce? To get there, the building is configured with two open spaces, one in front and one at the rear, and a central technical area. Found in the latter all technical (HVAC) and sanitary and storage space. The first two areas can thus be built without technical or structural constraint. New wooden structures allow not find any carrier therein. Each intermediate floor is fire resistant, levels can also be arranged according to different functions. Finally, we tried to maximize the integration of principles of bioclimatic architecture: -choice natural materials (wood fiber and cellulose for insulation, FSC wood, coated with clay); -maximisation contributions in natural light while controlling the overheating (dynamic simulation); -toiture vegetated garden layout and according to the principles of permaculture; -aménagement darker central spaces with technical; - control of the quality of the air with CO2 sensors; -choice clay as plaster to increase inertia and improve management of the humidity in the air; -etc.

Energy

Energy consumption

Primary energy need : 53,00 kWh/m².an

Primary energy need for standard building : 213,00 kWh/m².an

Calculation method :

CEEB : 0.0005

Final Energy : 21,00 kWh/m².an

Breakdown for energy consumption :

Heating Cooling 4% 20% 28% Breakdown Lighting & Home automation auxiliary 9% 40%

More information :

Coverages are simulations, our design notes are available

Initial consumption : 1 403,00 kWh/m².an

Envelope performance

Envelope U-Value : 0,25 W.m⁻².K⁻¹

More information :

We reach a K18 and net energy requirement <15 kWh / m².year with: -Isolation from inside the existing wall brick front (16 cm wood wool) U = 0.23 W / m²K; -Isolation from the outside of the rear walls (23 cm cellulose from wood frame with additional external insulation polystyrene 16 cm) U = 0.10 W / m²K; -Isolation flat roofs and roof slopes (23 to 30cm in the cellulose structure and exterior insulation type sarking minimum 6 cm) and 0.13 U = 0.11 W / m²K; -Isolation of the floor slab (15 cm projected polyurethane) U = 0.14 W / m²K; -vitrage and high performance chassis (double glazed window to rear and three front) Umoyen = 0.95 W / m².K air change rate n50 <0.6 h-1.

Building Compactness Coefficient : 2,18

Indicator : n50

Air Tightness Value : 0,60

Renewables & systems

Systems

Heating system :

- Heat pump
- Fan coil

Hot water system :

- Heat pump

Cooling system :

- Reversible heat pump
- Fan coil

Ventilation system :

- Free-cooling
- Double flow heat exchanger

Renewable systems :

- Solar photovoltaic

Renewable energy production : 100,00 %

A heat pump provides heat and cooling. A photovoltaic installation (with integrated power optimizer in each module) is present on the roof back sides and on one of the flat roof.

Environment

Urban environment

Downtown building. Near a train station (15 min walk), bus stop at 18 meters and construction of a bicycle storage.

Land plot area : 185,00 m²

Built-up area : 76,00 %

Products

Product

Solar photovoltaic system

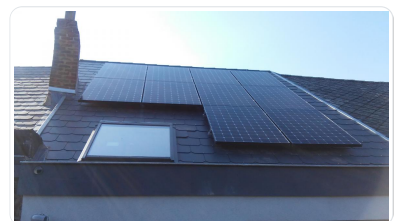
BenQ

<http://www.benqsolar.com>

<http://www.benqsolar.com/>

Product category : Table 'c21_china.innov_category' doesn't exist SELECT one.innov_category AS current,two.innov_category AS parentFROM innov_category AS oneINNER JOIN innov_category AS two ON one.parent_id = two.idWHERE one.state=1AND one.id = '29'

To achieve zero-energy standard, we have to compensate for on-site consumption in heating, cooling and lighting. The most appropriate technology is a photovoltaic system. To compensate our consumption, the panels were placed on the back side and on one of the flat roof.



The panels are not visible from the front of the building and are quite well integrated on the flat roof which makes the discrete rear. The only negative would be the view that one has from the inside on the panels placed flat roof.

Ventilation system with heat recovery

Zehnder

info@zehndergroup.com

<http://www.zehnder.be>

Product category : Table 'c21_china.innov_category' doesn't exist SELECT one.innov_category AS current,two.innov_category AS parentFROM innov_category AS oneINNER JOIN innov_category AS two ON one.parent_id = two.idWHERE one.state=1AND one.id = '19'

In our buildings, especially those where airtightness is very neat, ventilation is a necessity. We must bring fresh air into the local "dry" and extract stale air of the local "wet". But this breakdown leads to an additional energy consumption; heat recovery is an effective way to limit the energy and environmental impact thereof. It is the role of the heat exchanger.

This allows heat recovery in winter air purser nine at a temperature higher than the outside which significantly enhances occupant comfort. Thanks to its bypass, ventilation allows for the "night cooling" in summer and cool the building during the night to limit overheating.



Clay plaster "Terres d'Hautrage"

Lebailly

lebailly.flament@gmail.com

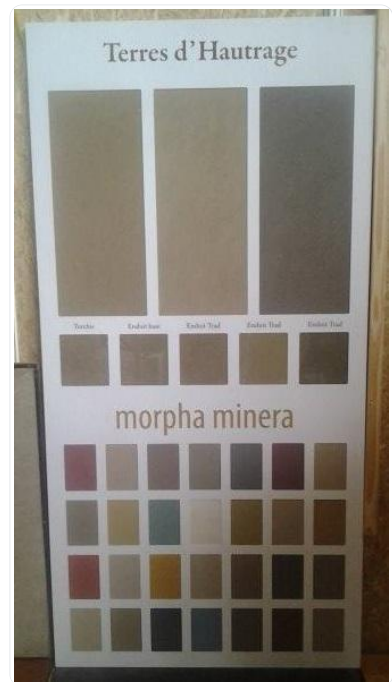
<http://www.lebailly.com/fr/terresdhausage.htm>

Product category : Table 'c21_china.innov_category' doesn't exist SELECT one.innov_category AS current,two.innov_category AS parentFROM innov_category AS oneINNER JOIN innov_category AS two ON one.parent_id = two.idWHERE one.state=1AND one.id = '12'

Some coatings selected for the Project 55 are clay-based, the other raw materials are sand, sandstone and natural vegetable fiber. Clay is a local product because exploited Hautrage (near Mons). The use of coated "Terres d'Hautrage" offers many advantages both for the comfort of the habitat and the environment. As for the comfort they bring: -from the thermal inertia, especially valuable in passive or zero-energy buildings; -a large capacity hydro-regulation. This water vapor sorption capacity improves indoor humidity conditions. The excess moisture from the indoor air are stored by the material and inversely moisture material is transferred to the ambient air when it is too dry. The sorption capacity of raw land far exceeds that of other construction materials; -a highly hypoallergenic environment. -a decrease in high frequency electromagnetic radiation -a significant acoustic comfort. The rough surface coatings, density differences of raw materials (clay, sand, organic fibers) attenuate sound reverberation in a room. Products "Terres

d'Hautrage" are characterized by low embodied energy and are environmentally friendly.

Given the many positive aspects mentioned above, the acceptance of this type of product is very good.



Natural cellulose insulation

Isoproc

info@isoproc.be

<https://www.isoproc.be>

Product category : Table 'c21_china.innov_category' doesn't exist SELECT one.innov_category AS current,two.innov_category AS parentFROM innov_category AS oneINNER JOIN innov_category AS two ON one.parent_id = two.idWHERE one.state=1AND one.id = '29'



The tissue paper is made from recycled paper. It is delivered in bulk and is very suitable for filling wooden structures: walls and roofs. It has other advantages: -the cellulose is highly resistant to fire; -thanks to its elasticity and structure, it does not attract insects and rodents. -the cellulose temporarily constitutes a buffer stock of moisture up to 25% of its volume before losing its effectiveness; -Low -insonorisation gray energy.

The cellulose insulation contributes to a pleasant living environment: -thanks to its high capacity of heat absorption, it helps reduce risks of overheating in summer; -it has an action as acoustic insulation, significant advantage in an office building. It thus offers interesting advantages for the occupants of the building (in terms of comfort) in relation to a non-natural insulator.

Efficient LED lighting

Philips

lightinginfoservice@philips.com

<http://www.philips.be/>

Product category : Table 'c21_china.innov_category' doesn't exist SELECT one.innov_category AS current,two.innov_category AS parentFROM innov_category AS oneINNER JOIN innov_category AS two ON one.parent_id = two.idWHERE one.state=1AND one.id = '17'

Lighting accounts for a significant share of energy consumption in office buildings. In addition, the heat generated by the lighting elements could cause overheating in the building. LED technology can meet numerous performance requirements. The advantages are many: -Low power consumption; -Duration living much longer than conventional lighting; -security of operating at very low voltage. -Low heat generation. -No UV output. -Large choice of color temperature; -possibility alternating on / off fast and frequent without damaging the lamp; -etc.

This technology ensures optimum comfort for workers. It is adapted according to the use of premises: work, meeting, relaxing, etc.

Costs

Construction and exploitation costs

Total cost of the building : 349 000 €

Subsidies : 120 000 €

Health and comfort

Water management

Two rainwater collectors are placed in the project: a first in the garden to collect rain water from the garden shed and water the garden; -a second, a cistern beneath the terrace, to recover the waters of the roofs of the building and supplying rainwater toilet. According BATEX calculation sheet provided by the Walloon Region, the water consumption of the building is reduced by 65% compared to a reference building.

Indoor Air quality

Regarding the quality of indoor air, we chose a double flow ventilation system with CO2 sensors and we privileged natural materials (clay plaster, natural insulation).

Comfort

Health & comfort : Regarding natural light, a study was conducted with software Dialux calculation and Daylight visualizer. The study of the illumination was carried out to: -a overcast sky (diffuse illumination); -a clear sky with sun (direct illumination) on several dates (solstices and equinoxes and this by no timetable for the full day). The first point has served us identify areas that would naturally not sufficiently enlightened and measure the impact of a possible dome (finally not placed because it would have caused too much glare). The second point has helped us to quantify the effectiveness of any fixed solar protections and to identify areas with high luminance (glare factor) in the studied buildings. On artificial lighting, Dialux a study was conducted to select the most suitable luminaires to bring sufficient comfort by reducing light energy consumption.

Carbon

GHG emissions

GHG in use : 15,00 KgCO₂/m²/an

Methodology used :

See spreadsheet

GHG before use : 55,00 KgCO₂ /m²

Building lifetime : 50,00 an(s)



, ie xx in use years : 3.67

Life Cycle Analysis



Eco-design material : Much attention has been paid to the type of materials placed in this project: natural -isolants: wood wool and cellulose primarily; -Wood FSC (bearing structure and OSB); Certified plaster -plaques cradle-to-cradle; -enduit clay on the inner walls to the moisture management and supplying inertia. LCA balances comparisons were carried out on the basis of the study "Choice of materials LCA walls" for choosing wall constituents.

Contest

Building candidate in the category



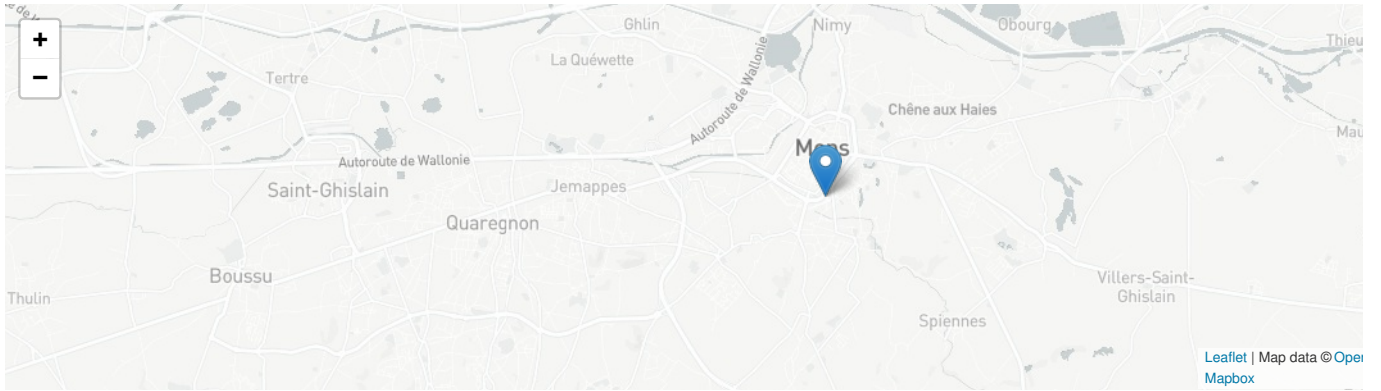
Energie & Climats Tempérés



Coup de Cœur des Internautes



Grand Prix Rénovation Durable



Date Export : 20230508005935