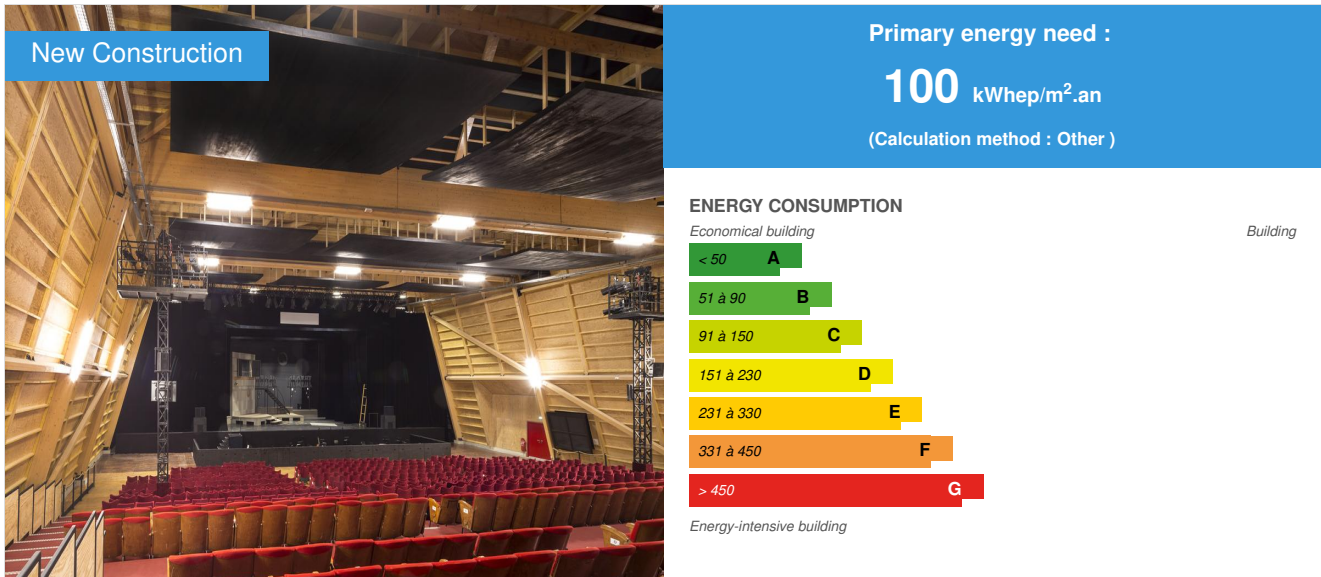


Opera Confluence in Avignon

by De-So Communication / © 2019-06-17 16:02:40 / France / 6403 / FR



Building Type : Concert or conference hall, theater
Construction Year : 2017
Delivery year : 2017
Address 1 - street : 1 Place de l'Europe 84000 AVIGNON, France
Climate zone : [CsC] Interior Mediterranean - Mild & dry summer.

Net Floor Area : 1 520 m²
Construction/refurbishment cost : 1 800 000 €
Number of Seat : 850 Seat
Cost/m² : 1184.21 €/m²

General information

Designed in less than a year, the Opera Confluence of Avignon is **an ephemeral theater for 950 spectators** , active during the restoration of the historic theater downtown.

This unique, frugal and characterful place defies the standards and meets the dual objective of offering the **essential qualities for an opera and anticipating its dismantling, resale and reassembly on another site or for another use** .

Limiting its impact on the environment, the operation has minimized interventions in the field and developed flexible solutions in its present and future use: separate technical equipment, streamlining of the envelope, demountable and scalable timber frame, etc.

This project was presented at the ITEAC conference in London, Forum Bois 2018, received the Golden Marianne of sustainable development early 2019, many publications (the stage, front stage, Monitor, etc.).

For economic reasons, the Opera's research has resulted in **the recovery and reuse of a maximum of equipment from the Royal Opera of Wallonia of Liège** , themselves already used by the Fenice of Venice during its reconstruction in the early 2000s. Only the marquee (because of the power of the Mistral) and outdated electrical and ventilation equipment could not be reused in Avignon.

While the eco-friendly approach was not a stated goal of the project initially, it has become a response to time and budget constraints. She has thus instinctively gathered all the actors and **the frugal character represents today one of the characteristics of the room** .

This singular set creates a unique combination, an original atmosphere. **The "low tech" character leaves the imagination to seize the place, opens up a**

multitude of evolutions.

Sustainable development approach of the project owner

In Avignon, the exercise had to be competitive with standardized rental solutions, meet the same deadlines, the same budget and offer such a large conversion capacity. Subject to a precarious, limited-time building permit, the operation was able to achieve its objectives by providing alternative responses to the constraints of the PPRI, accessibility or thermal regulation.

Limiting its impact on the environment, the operation has minimized the interventions in the field as developed flexible solutions in its present and future use: separate and recycled technical equipment, streamlining of the envelope, demountable and scalable wood frame ...

All elements, including scenographic, being independent, they ensure the scalability of the project.

While the eco-friendly approach was not a stated objective of the project, it has become a response to time and budget constraints. She has thus instinctively gathered all the actors and the frugal character represents today one of the characteristics of the room.

Architectural description

Context and environment

As a temporary project, the design of the Opera Confluence was dictated by very short deadlines adjusted to the cultural seasons and a reduced budget. For economic reasons, the Opera has sought to recover and reuse a maximum of equipment from the Royal Opera of Wallonia of Liège, themselves already used by the Fenice of Venice during its reconstruction in the early 2000s .

Only the big top (because of the power of the Mistral) and inadequate technical equipment could not be reused on this project. A new envelope had to be imagined, able to accommodate the platform, the scene and the grill recovered, while ensuring the reception of the public in optimal conditions. The hall is part of the public facilities of the train station and the Courtine district.

Opened by its main entrance to the South, sheltered from the Mistral, it temporarily qualifies the district of the station.

Beyond its capacity (structural scope, comfort, interior volume ...), budget and tight schedule, the room is removable. It can be transposed to another site, find new vocations and allow a financial valuation. Co-design is the key to the success of any operation. Motivation and animation around a project can only last if the coherence between the answers and the needs of the project is found. This synergy took in Avignon, it took advantage of the ambitions of the project management, the common experience.

The extreme speed of the project, from its first sketches to the first performance (14 months), mobilized all the actors. It proves that the traditional approach, sometimes called into question, of a distinct project management allowed at the same time a strong collaboration with the users and the control of the operation with the companies.

The construction began in July 2017 and the Opera Confluence was inaugurated on November 24, 2017.

Simplified geometry

In a simple and unitary form, the perception of the building is based on a precise and strong implantation in the environment. In Avignon, the axis ordered by the external facilities of the TGV station affirms the layout of the room as structuring element.

From the minimum template given by the recovered elements - stand hold, stage surface, grill height - the design of the project focused on optimizing the envelope and structure, not only from a point of view constructive, but also with regard to the use of the building.

The acoustic comfort of artists and spectators, linked for example to a lyrical representation, was simulated to effectively combine the geometry of the room with a rationalization and reduction of the surface of the envelope.

The inclined facades, their interior finishing in plywood and locally absorbent, respond to better acoustic diffusion.

The synthesis and the structural, acoustic and thermal simulations made it possible to reduce the number of elements and to specify the choice of the materials.

The rectangular base plane integrates the recovered platform and scene. It is punctuated by the structural frame every 7.5 m, itself multiplied by the repetition of prefabricated caissons of the envelope.

Building users opinion

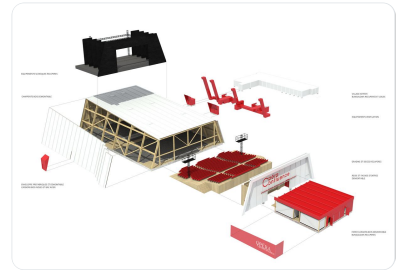
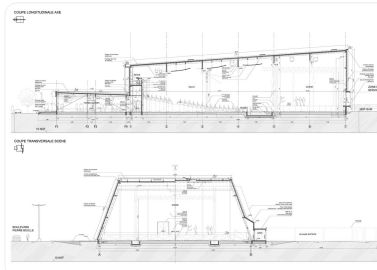
The establishment of the opera in the Courtine district has ensured performances in optimal conditions with very positive feedback from faithful spectators and dancers, musicians and actors and attracted a new audience, family and school. The ephemeral dimension also participates in the attendance of this atypical place.

See more details about this project

<https://deso-architecture.com/projet/opera-ephemere-avignon-84/>

Photo credit

Daniel



ROUSSELOT Photographer

DE-SO architects (for graphic supports, cuts, axono ..)

Stakeholders

Contractor

Name : Communauté d'agglomération Grand Avignon - Opéra Grand Avignon

Contact : 04 90 84 47 00 - Monsieur Thierry Batteault

<http://www.grandavignon.fr>

Construction Manager

Name : DE-SO Architectes

Contact : Valérie Defrain - 0155439707

<http://www.de-so.com>

Stakeholders

Function :

GAUJARD TECHNOLOGIE SCOP

(0)4 90 86 16 96

<http://www.bet-gaujard.com/>

BET Structure and wooden envelope

Function : Other consultancy agency

BETREC

0476421727

<https://www.betrec.com/>

BET Economy, structural work and VRD

Function : Other consultancy agency

MOUNIER PEYRIN

04 75 46 00 56

BET CV Electricity

Function : Structures calculist

ALTIA

01 53 00 90 65

<https://www.altia-acoustique.com/>

BET Acoustics

Function : Other consultancy agency

ART SCENIQUE

0674751854

<http://art-scenique.fr/>

BET Scenography

Function : Others

APAVE SUD EUROPE SAS

04 90 31 54 10

<https://www.apave.com/actualite/apave-sudeurope-de-nouveaux-locaux-montpellier>

Control office

Function : Company

RIVASI

04 75 91 80 30

<https://rivasi.com/>

Earthworks Lot - GO-Fondations- VRD

Function : Company

SDCC Varcès (38) & MARGUERON Belley (01)

04 76 72 84 58 /

<http://www.sdcc.fr/index.php/metiers> / <http://www.margueron.fr/>

Lot frame and envelope

Energy

Energy consumption

Primary energy need : 100,00 kWh_{ep}/m².an

Primary energy need for standard building : 100,00 kWh_{ep}/m².an

Calculation method : Other

More information

The ephemeral nature of the equipment did not require an assessment of consumption.

Renewables & systems

Systems

Heating system :

- Heat pump

Hot water system :

- Individual electric boiler

Cooling system :

- Reversible heat pump

Ventilation system :

- Double flow heat exchanger

Renewable systems :

- Heat pump

Environment

Urban environment

Free ground vis-à-vis the Avignon TGV train station, waiting for a concerted urban development.

Products

Product

Product category : Structural work / Carpentry, cover, tightness

Composition of prefabricated panels in wood frame, external insulation and metal cladding.

Costs

Construction and exploitation costs

Total cost of the building : 1 800 000 €

Contest

Reasons for participating in the competition(s)

UNE IDENTITÉ RENOUVELABLE

L'Opéra Confluence est un simple assemblage. Il intègre **des équipements scénographiques recyclés, conçoit une coque démontable et se complète d'équipements techniques et annexes selon ses besoins.** L'ensemble crée une combinaison unique, une ambiance originale.

L'Opéra Confluence se révèle de l'intérieur. **Contrastant avec le parement métallique inerte en façade, le bois est démultiplié en éléments de structure, en panneaux de finition et en éléments acoustiques.** Par son odeur, sa couleur, son timbre et son toucher, le bois crée un environnement protecteur et chaleureux. L'objectif est atteint par l'histoire que le projet a su faire naître de la rencontre des acteurs et d'ambitions communes.

La vie et l'identité de la salle éphémère continuera d'évoluer au fil de ses installations.

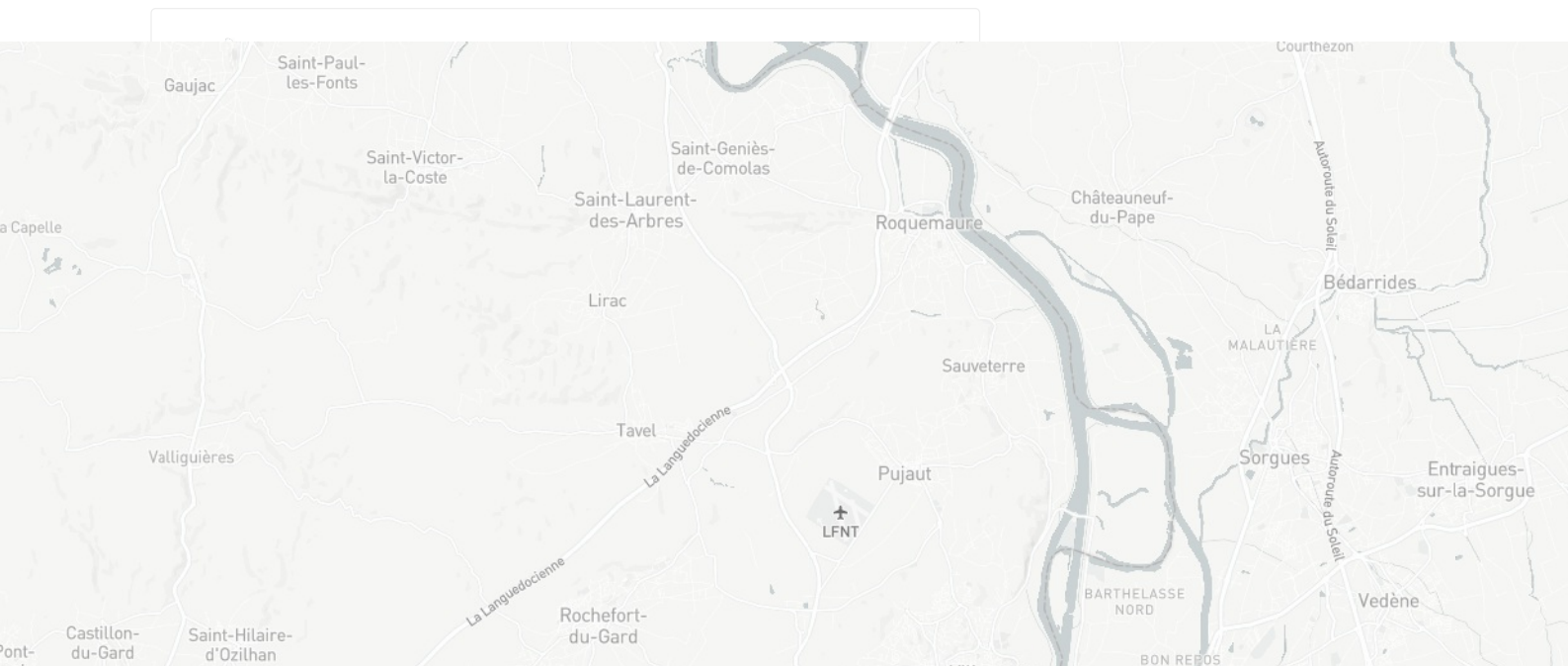
UN BÂTIMENT NOMADE

L'Opéra Confluence est composé d'éléments combinables, recyclés ou neufs. Bien qu'ajustés les uns aux autres, ces **éléments aussi bien techniques, structurels que scénographiques, restent indépendants et modifiables.** Conçue et optimisée pour des représentations lyriques, la salle peut, par ses dimensions, accueillir une multitude de fonctions. **Le démontage-remontage de la salle constituera le prochain objectif du projet.** Il confirmera la conception et la mise en oeuvre des caissons, des assemblages de la charpente et des traitements de finitions.

Building candidate in the category



Bas Carbone





Date Export : 20230513083249