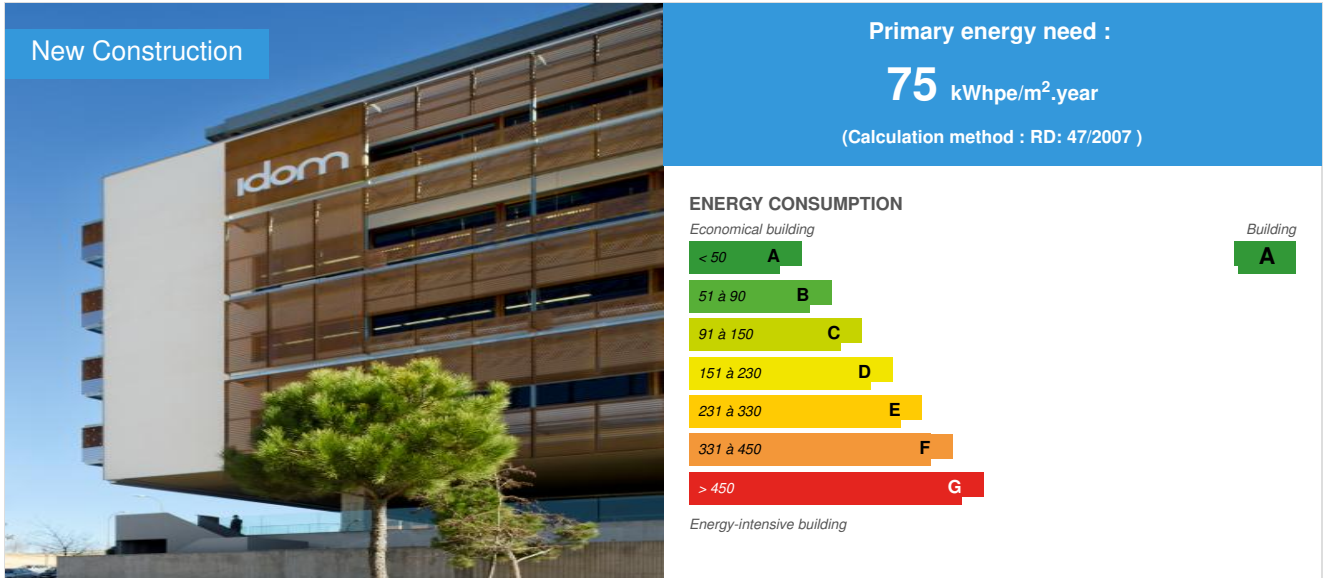


IDOM-ACXT OFFICE IN MADRID

by Antonio Villanueva / © 2012-09-13 17:48:46 / España / 14067 / ES



Building Type : Office building < 28m
Construction Year : 2011
Delivery year :
Address 1 - street : Avenida de El Monasterio de El Escorial, 4 28049 MADRID, España
Climate zone :

Net Floor Area : 16 000 m²
Construction/refurbishment cost : 16 000 000 €
Cost/m² : 1000 €/m²

General information

Description: The new IDOM-ACXT office in Madrid is an office block of about 10,000 m² above ground level and 7,000 m² below ground level. It has been entirely designed by IDOM-ACXT following the usual company's characteristic guidelines: functionality, simplicity and quality. Plus, in this case, IDOM-ACXT has taken another step towards technological excellence positioning itself at the forefront of energy efficiency and sustainability.

Thermo active structure (TABS: Thermo Active Building System): IDOM-ACXT has developed the engineering and execution of a thermo active structure system adapting it to Spanish climate for the first time.

There are two main advantages of having a system of this kind: 1) the energy consumption of the building and the production are disengaged as regards to time thanks to the energy storage capacity of the structure. 2) The temperatures of the heat transfer liquids are very close to room temperature (low exergy systems). These two characteristics together, endow the system with possibilities far beyond any other HVAC system on the market.

During the summer, the structure is cooled overnight by means of an evaporative cooling system, without the need of coolers. This system takes up 85% of the cooling energy of the building almost cost-free. The HVAC consumption over the summer is around 12 kWh/m² and year and it's over 120 kWh/m² and year in a conventional building.

Building envelope: in order for the active structure to deal with the building's needs, IDOM-ACXT has very carefully designed the building envelope. The building has exceptional solar protection thanks to a double green roof and double green façades on the south, east and west elevations; 12 cm thick insulation on the outside of the enclosure and argon filled glazing with a 1.1 W/m²k U factor. Plus, the inside of the building makes the most of the thermal mass of its enclosure by being in contact with them, doing without false ceilings, technical floors or insulating panels.

Other systems: the building also has a textile ducts air distribution system which propels air at 19°C and distributes it by semi-shifting, which allows it to free-cool the air during the whole winter and intermediate seasons. The building carries out free-cooling during 2,200 hours out of its 3,200 operation hours.

Additionally, the building has the capacity for natural ventilation when conditions are favourable, removing the air from the atriums through 6 motorized relief vents and opening tilting windows on the north façade allowing fresh air in directly towards the ceiling.

Water management: the building collects all the rain water from its roof (2,400m²) and stores it in 4 tank-ponds on the ground floor, with a 40m³ capacity each. These ponds have a sheet of water on top which is the last to disappear and they supply the watering system, the urinals and the evaporative cooling of the structure. Purification is carried out through an ultraviolet valve in order to preserve life conditions and be able to hold plants and animals.

LEED certification: the IDOM-ACXT office building in Madrid is in the process of getting a LEED certification, New Construction (NC), being one of the first buildings in Spain with a LEED-NC-GOLD certification. Apart from the exceptional energy performance, another great many measures have been taken intended to reduce the environmental impact of the building and its activity.

The building has a bicycle-park, spaces for electrical vehicles and exceptional connections with public transport. The choice of materials has been thoughtful, favouring the use of local ones. All timber has been certified by well-known entities that guarantee its origin. Lastly, inside air quality has been particularly taken care of. Each room and office in the building has a CO₂ probe to control the level of ventilation. The textile ducts serve as a last filter and the scarcity of carpets and dust absorbing materials make air quality one of the building's great features.

Data reliability

3rd part certified

Stakeholders

Stakeholders

Function : Designer

IDOM-ACXT

aroman@acxt.net

<http://www.acxt.net/>

Function : Developer

IDOM-ACXT

aroman@acxt.net

<http://www.idom.com>

Function : Thermal consultancy agency

IDOM-ACXT

aroman@acxt.net

<http://www.idom.com>

Contracting method

Separate batches

Owner approach of sustainability

IDOM-ACXT approaches this project from an angle based on thoughtful sustainability, trying to reduce the number of elements during the design instead of adding them, with the idea of solving problems created in previous stages of the design itself. The result is a cheaper building of easier maintenance and which consumes less energy than a traditional building.

Architectural description

The initial aspiration of the assignment was simple: to erect a building that would house the activity of IDOM, while at the same time representing it and becoming as it were a visiting card for clients. Its culture and way of working should be clear from the building itself. This was an opportunity to turn a building into a showcase for its philosophy. CODES - KEYS Where could we find the keys that represent a firm like the one at hand? Taking into account the special culture of IDOM, it was obvious we would have to abandon any idea of its being media approved, short term or of rapid recognition or emotional representative. All these qualities seem to be an obsession which worries many corporations today, who need rapid success and visual appeal. We decided to focus our work far from that rationale. We aimed for true environmental comfort, measureable, credible, real and not conditioned solely by its representative or spatial tectonic values. Our objective was also to create a more domestic, porous, ventilated, natural and agreeable working environment; something closer to the working conditions of a home than those of a typical tertiary bubble. We had to overcome the classic miseries and limitations of the 20th century office, consequences of its unhealthy attempt to create an artificial atmosphere and an iconic brand image. In order to change those paradigms, a radically new approach was necessary. It was essential to make energy, the load bearing systems, the HVAC, the light, the orientation, the management of water or space and the sustainable strategies the bottom line of the codes over which the architectonic and formal references were to be supported, and not the other way round. We had to forget many references

and images, load up with reasons and work with a new premise: the idea is not imposed on reality; the idea is conceived by the needs that reality imposes.

BUILDING THE NON – OFFICE An atmosphere closer to that of a household which would do away with the axioms of the traditional office building. A space free from false ceilings and floors and with wood carpentry, textile ducts, bare masonry walls, slow propulsion of air at room temperature and operational windows...in a nut shell: the non – office. The HVAC based on radiant systems (TABS), using the high thermal inertia of the structure and its post-tensioned concrete floor slabs. An air propulsion system conceived exclusively for slow air renovation through textile ducts, which can be cleaned and which avoids noise pollution. Great structural spans that allow for a smooth and flexible flow area. Sun protection towards the south, and toned down light from the north. The perception of a continuous space both horizontally and vertically. A setting that includes fragments of nature, hanging gardens and green walls. A correct strategy for reusing water making the most of it for visual and acoustic pleasure. **GOOD, ATTRACTIVE & CHEAP** A building of reasonable cost and simple maintenance, easy to use and understand, flexible, kind in its presentation, quick upon changes, good, attractive and cheap and maximalist in its aspiration. A hi-tech building with low profile technology, complex in its conception but simple in its resolution. We wanted a rigorously sustainable building, convinced of the high architectonic return of such an approach; an adequate balance between ecological, economic and social aspects. We pursued the aim of simply being able to work in a healthy environment, free from heat and cold, without any dazzles or toxic elements. All this implies high satisfaction levels and a healthy atmosphere. This dynamic fitted in perfectly with the strategic objective of IDOM, and that is how the user has perceived it: an effort to build new offices breaking away from the old guidelines.

Energy

Energy consumption

Primary energy need : 75,00 kWhpe/m².year

Primary energy need for standard building : 240,00 kWhpe/m².year

Calculation method : RD: 47/2007

More information :

85% of the thermal energy which is removed from the building is done so thanks to a combination of TABS (Thermally Active Building System) and a night evaporative cooling system. The great inertia of the system allows for the energy that the building contributes during the day to be stored in the structure and removed by hydraulic free-cooling overnight.

Envelope performance

More information :

South, east and west elevations: 0.25 W/m²K

North elevation U= 0.22 W/m²K

Glazing U=1.1 W/m²K

Roof 0.23 W/m²K

Floorings 0.21 W/m²K

Renewables & systems

Systems

Heating system :

- Condensing gas boiler
- Others

Hot water system :

- Condensing gas boiler
- Other hot water system

Cooling system :

- Others
- Others

Ventilation system :

- Natural ventilation
- Nocturnal ventilation
- Nocturnal Over ventilation
- Free-cooling

Renewable systems :

- Solar photovoltaic
- Other, specify

Smart Building

BMS :

Centralized system with over 2,300 reading/registry points.

Environment

GHG emissions

Building lifetime : 50,00 year(s)

Water management

Consumption from water network : 1 000,00 m³

Consumption of harvested rainwater : 800,00 m³

Indoor Air quality

High level of contribution air filtration and distribution through textile ducts. Interior air quality control by means of CO2 probes. Ventilation on demand

Products

Product

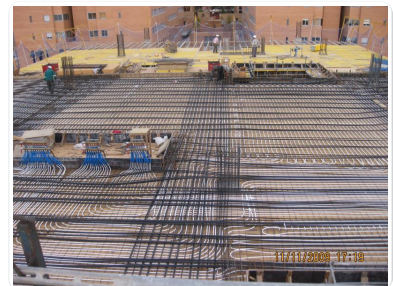
TABS (Thermally Active Building System)

Desarrollo de ingeniería: IDOM-ACXT. Fabricante tubería: UPONOR

Product category :

IDOM-ACXT has developed the engineering and the execution of a thermo active structure system adapted to Spanish climate for the first time.

Very good acceptance level. The comfort level is very high because the air systems don't have to 'desperately' fight against the building's conditions, as is normally the case in office blocks. Temperature is always ideal employing solely the air systems.



TEXTILE DUCTS

KE-FIBERTEC

<http://www.kefibertec.com/>

Product category :

Textile ducts for the distribution of ventilation in the floors.

Very good level of acceptance for its non-existing noise level and its exceptional degree of comfort. It also allows for the volume of flow to be varied significantly, ranging from its minimum to 10 times that without changing its diffusion properties. Diffusion is achieved by semi-shifting and flooding. Very good level of hygiene, last stage of filtration. Minimum maintenance.



RAIN WATER COLLECTION, TREATMENT AND REUSE SYSTEM

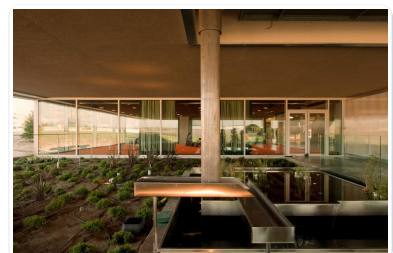
Desarrollo de ingeniería: IDOM-ACXT, Instalador: COMPLEN

Product category :

The building collects all the rain water from its roof (2,400m²) and stores it in 4 tank-ponds on the ground floor, with a 40m³ capacity each. These ponds have a sheet of water on top which is the last to disappear and they supply the watering system, the urinals and the evaporative cooling of the structure. Purification is carried out through an ultraviolet valve in order to preserve life conditions and be able to hold plants and animals.

Very good acceptance. People who walk through the areas near to the entrance of the building can see the water cycle for themselves for they can see the water being collected and stored in the water tank.

The atmosphere is much more pleasant due to the presence of water and the savings on urinals, cisterns and evaporative cooling system is significant.



Costs

Construction and exploitation costs

Global cost : 22 000 000,00 €

Reference global cost : 30 000 000,00 €

Renewable energy systems cost : 112 000,00 €

Energy bill

Forecasted energy bill/year : 80 000,00 €

Urban environment

New residential areas in Madrid.

Land plot area

Land plot area : 2 400,00 m²

Built-up area

Built-up area : 100,00 %

Green space

Green space : 400,00

Parking spaces

3 car-park floors with 135 spaces, 15 of which are reserved for electric vehicles and include charging equipment.



Date Export : 20230310110457